

SOUTH AUSTRALIA

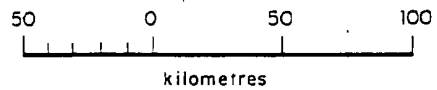
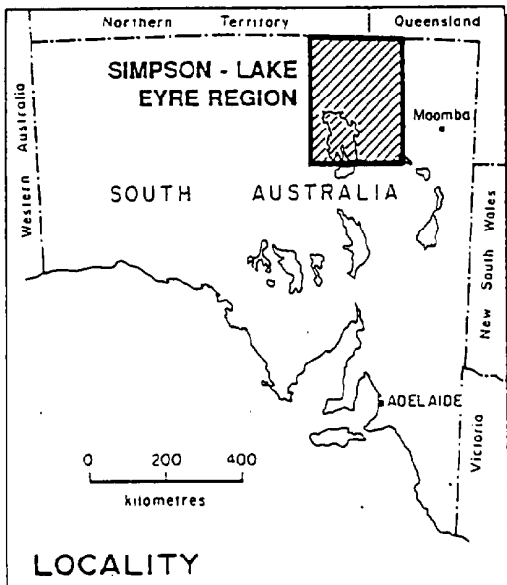
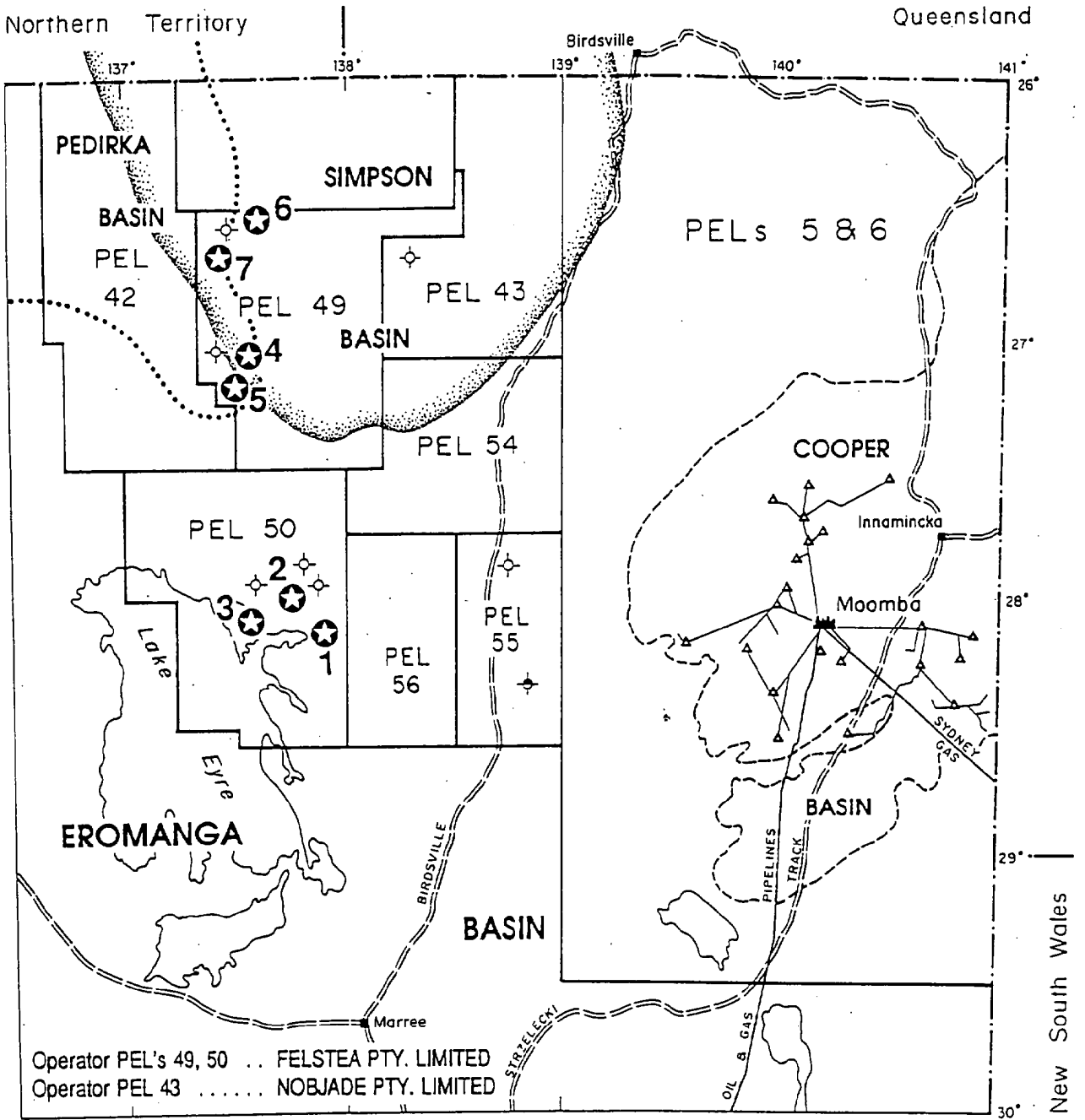


SIMPSON - LAKE EYRE REGION PETROLEUM PROSPECTS



DEPARTMENT OF
MINES AND ENERGY
SOUTH AUSTRALIA

October 1992



- ⊕ Dry well
- ⊕ Dry well, oil show
- ★ Prospect, strong lead
- ⌚ Gas processing plant
- △..... Oil or gas pipeline, satellite

SIMPSON - LAKE EYRE REGION PROSPECTS AND STRONG LEADS

LAKE PROMISE

BASIN: EROMANGA
 TENEMENT: PEL 50
 OPERATOR: FELSTEAL PTY. LTD.

LATITUDE: 28 08'
 LONGITUDE: 137 50'

SEISMIC LINE: 86-AGJ SP: 414

TD: 4,800 Ft 1,463 (m)

DRILLING TIME: 15 Days

DISTANCE TO MOOMBA: 250 km

OBJECTIVES:
 Namur Sandstone oil

STRUCTURE:
 Fault-bounded basement high with onlap and subsequent structural movement.

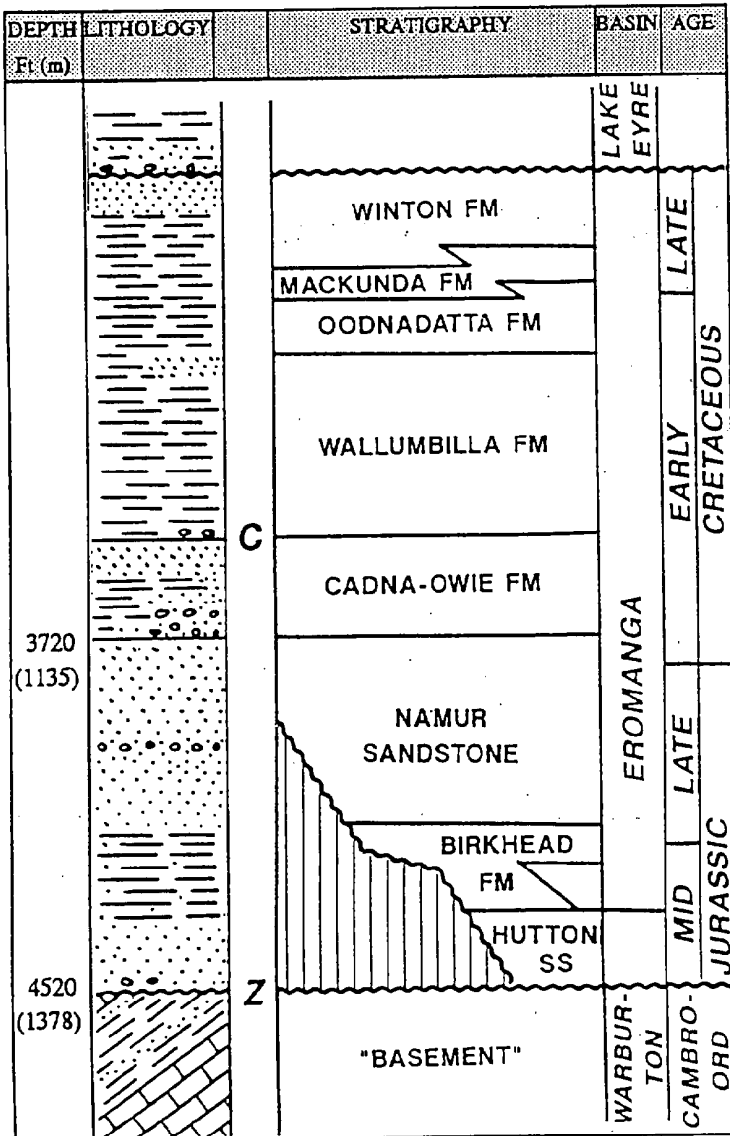
CLOSURE:
 Namur: 15,320 acres (to LCC)
 Pool: 6,200 acres
 % Area fill: 40%

POTENTIAL RESERVES: 46 MMSTB Rec.
 Assuming:
 Porosity = 15%
 Net Pay = 20 ft.
 Area = 6,200 acres
 Shrinkage Factor = 0.90
 SW = 30%
 Recovery = 40%

COMMENTS:
 Drillable prospect defined by 8 seismic lines.

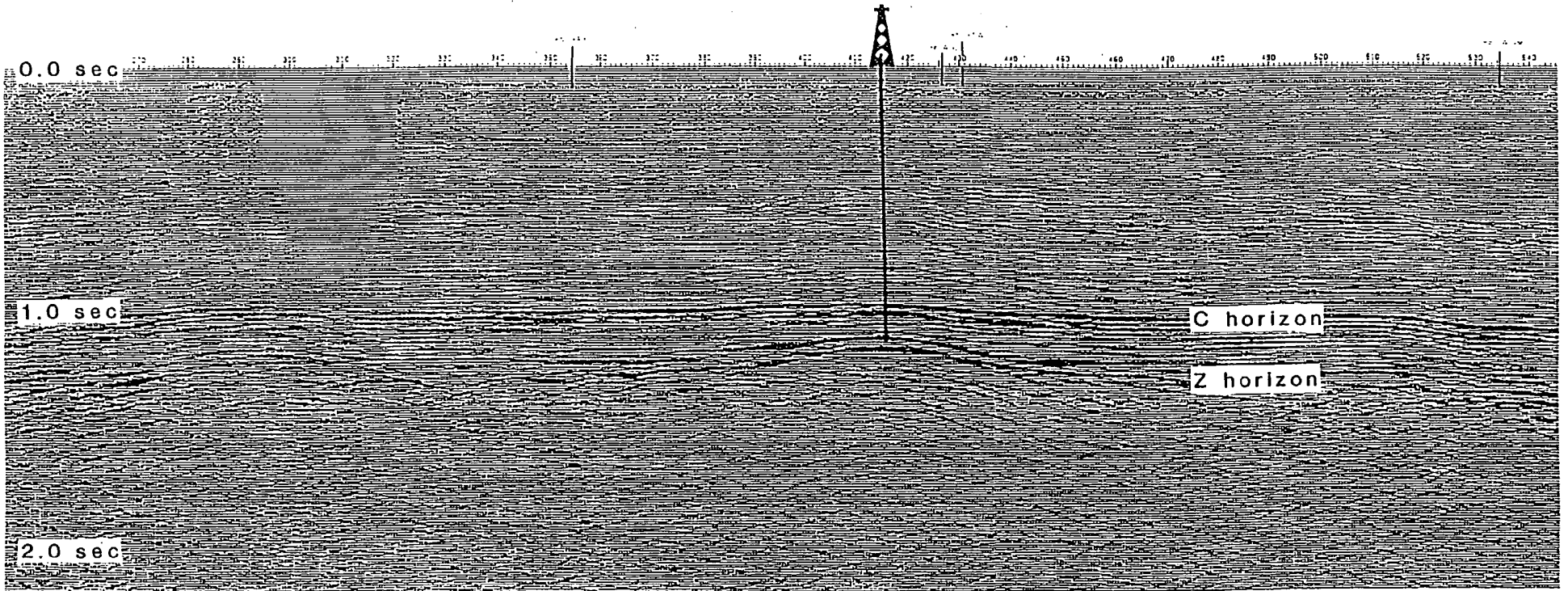
DATA SOURCES:
 SANTOS

SCHEMATIC STRATIGRAPHIC SUMMARY

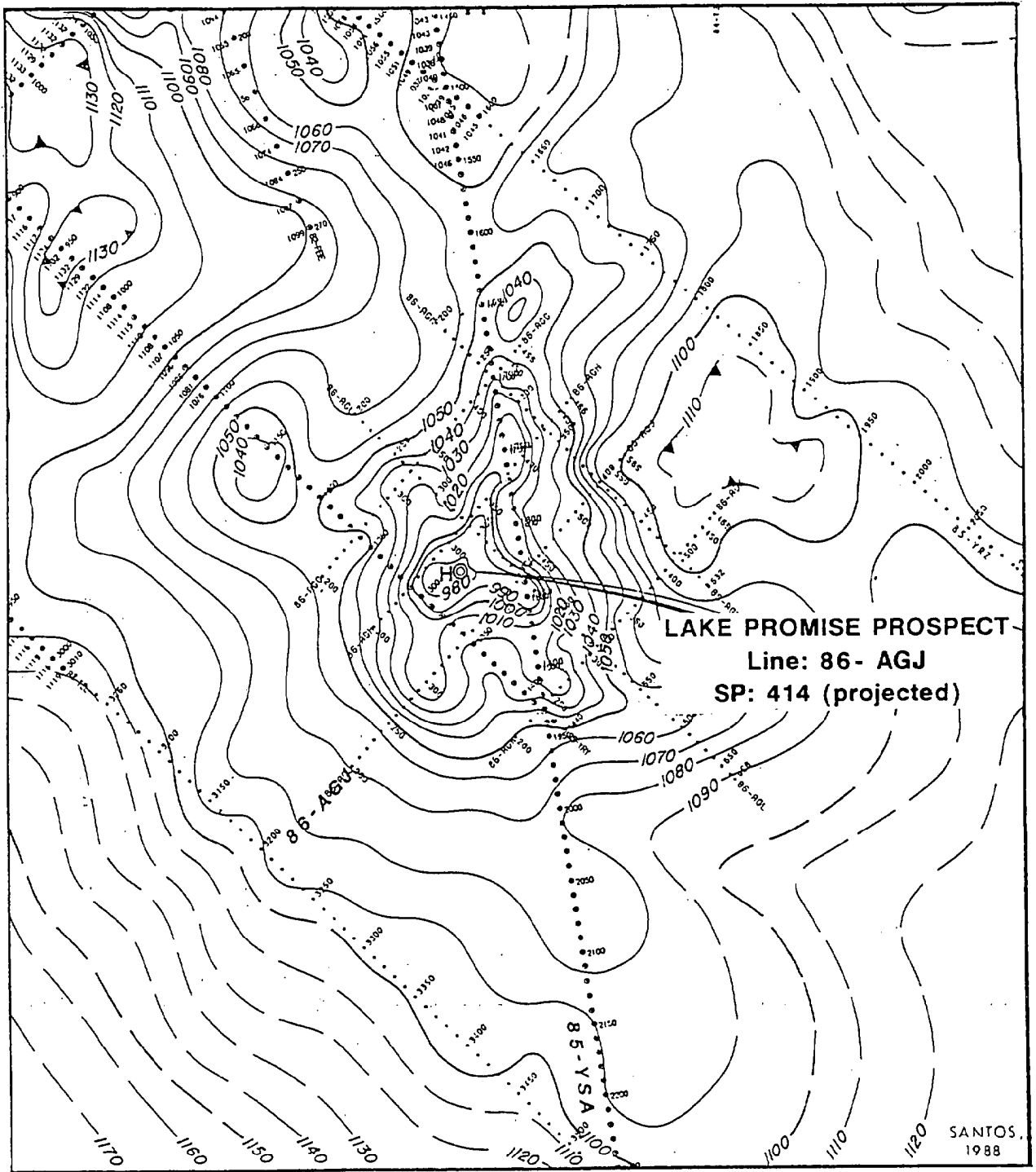


PROPOSED
LOCATION

PROSPECT EAST



LAKE PROMISE PROSPECT
1986 FLETCHER SEISMIC SURVEY
86-AGJ SEISMIC SECTION



LAKE PROMISE PROSPECT
1986 FLETCHER SEISMIC SURVEY

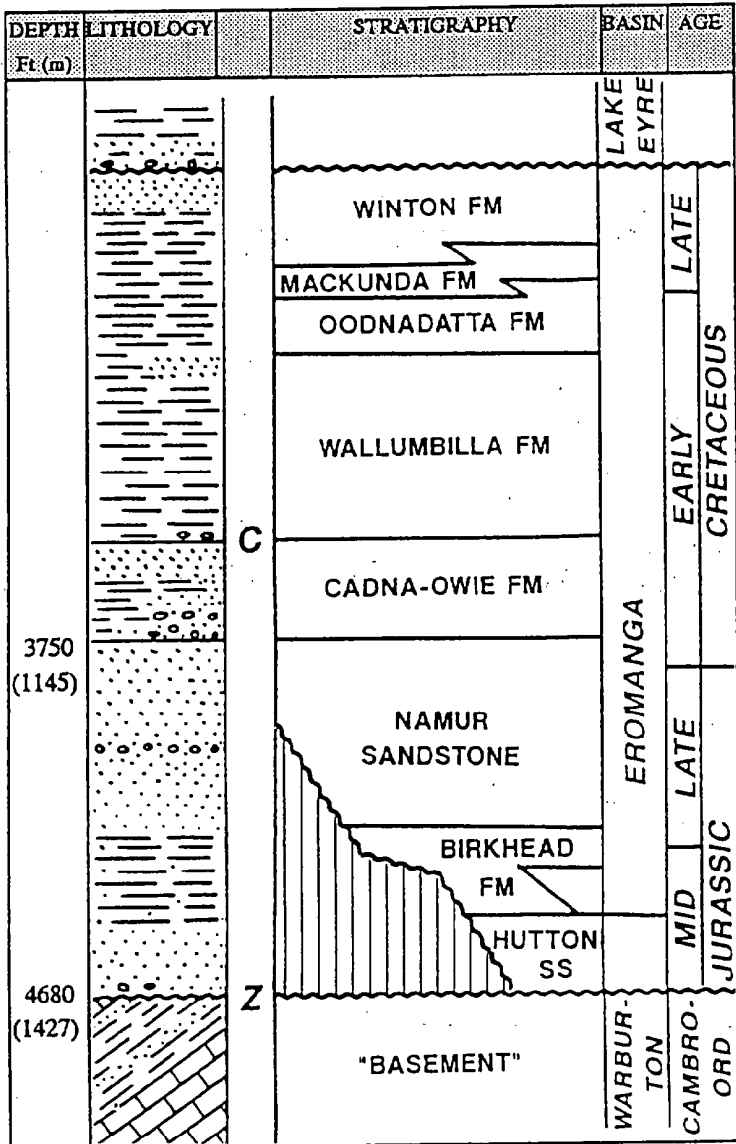
"C" TIME STRUCTURE

LAKE KOOL

BASIN: EROMANGA
 TENEMENT: PEL 50
 OPERATOR: FELSTEPA PTY. LTD.

SCHEMATIC STRATIGRAPHIC SUMMARY

LATITUDE: 27 56'
 LONGITUDE: 137 50'
 SEISMIC LINE: 85-YRW SP: 1359



TD: 5,000 Ft 1,524 (m)
 DRILLING TIME: 15 Days
 DISTANCE TO MOOMBA: 250 km

OBJECTIVES:
 Namur Sandstone oil
 STRUCTURE:
 Basement high with onlap and subsequent structural movement.

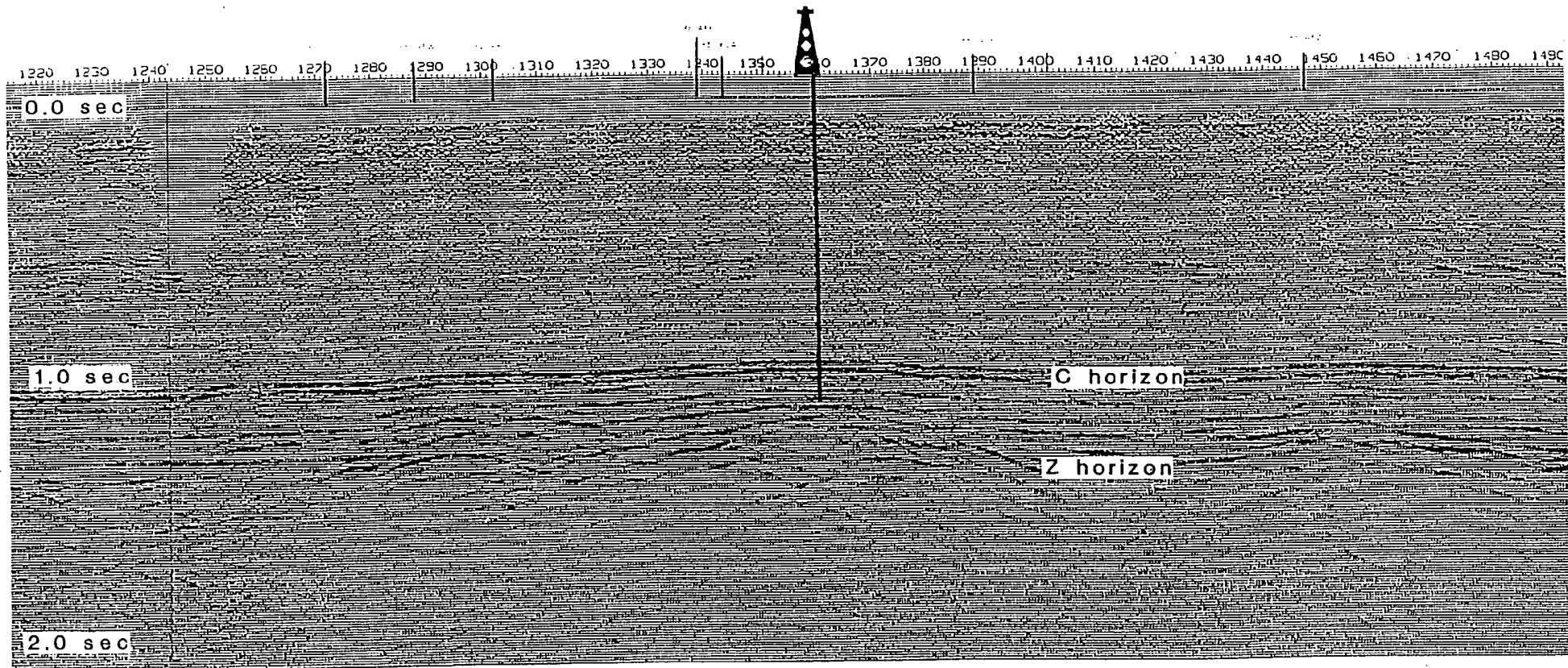
CLOSURE:
 Namur: 4,200 acres (to LCC)
 Pool: 2,225 acres
 % Area fill: 53%

POTENTIAL RESERVES: 13 MMSTB Rec.
 Assuming:
 Porosity = 15%
 Net Pay = 20 ft.
 Area = 2,225 acres
 Shrinkage Factor = 0.90
 SW = 30%
 Recovery = 40%

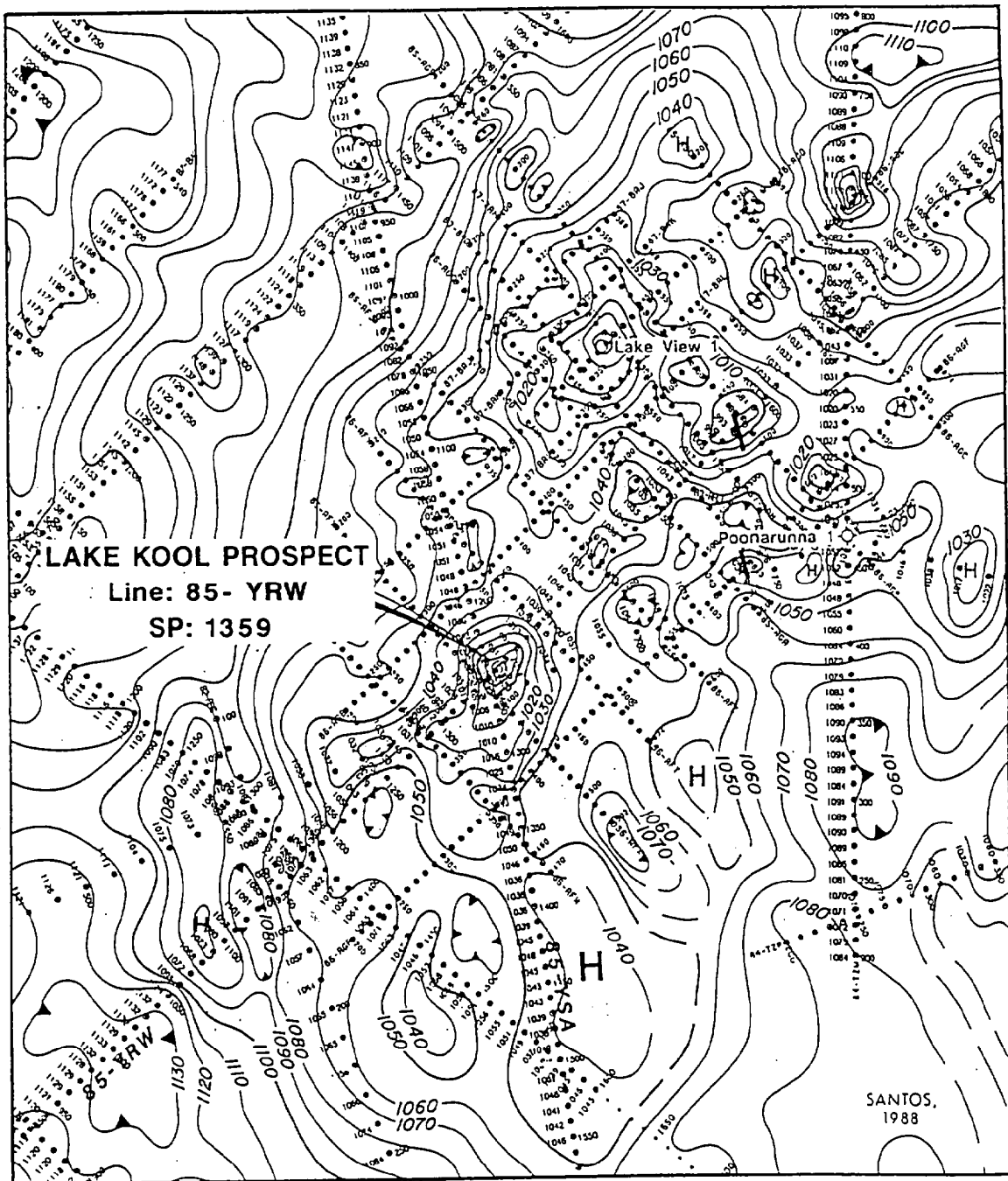
COMMENTS:
 Drillable prospect defined by 10 seismic lines.

DATA SOURCES:
 SANTOS

PROPOSED
LOCATION



LAKE KOOL PROSPECT
1985 MORPHETT SEISMIC SURVEY
85-YRW SEISMIC SECTION



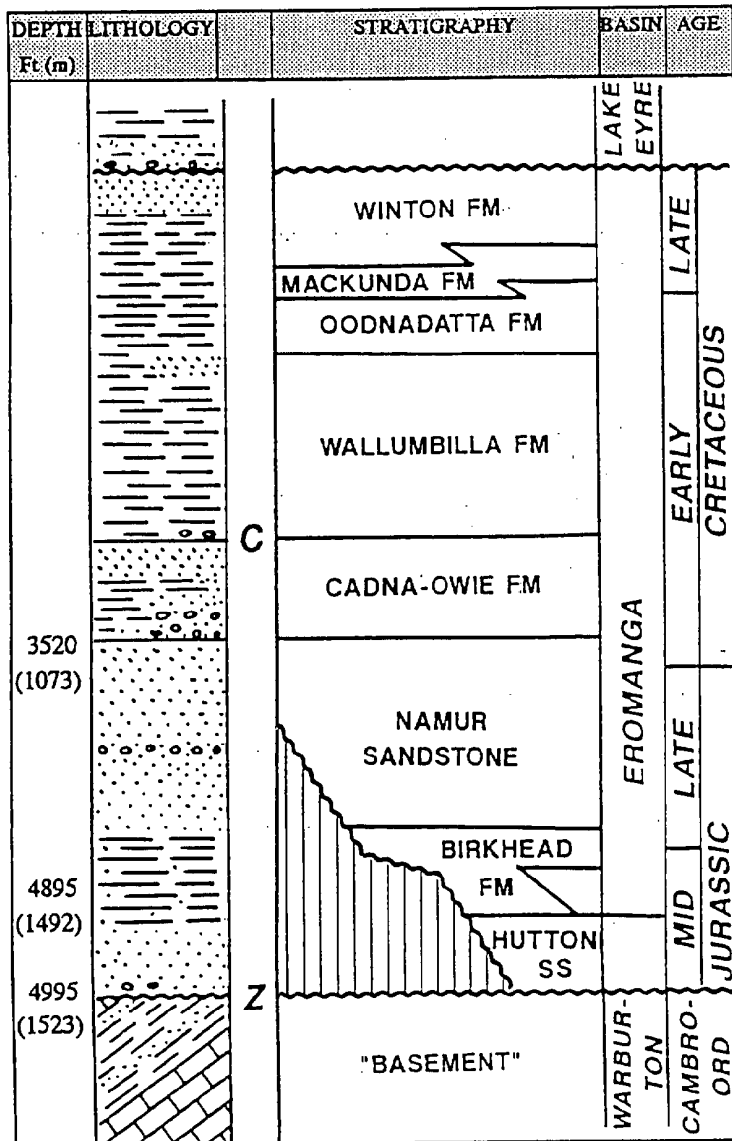
5 KM

LAKE KOOL PROSPECT
 1985 MORPHETT SEISMIC SURVEY
 "C" TIME STRUCTURE

PROSPECT 3
LAKESIDE

BASIN: EROMANGA
 TENEMENT: PEL 50
 OPERATOR: FELSTE A PTY. LTD.
 LATITUDE: 28 05'
 LONGITUDE: 137 34'

SCHEMATIC STRATIGRAPHIC SUMMARY



SEISMIC LINE: 86-AGN SP: 402

TD: 5,300 Ft 1,616 (m)

DRILLING TIME: 15 Days

DISTANCE TO MOOMBA: 280 km

OBJECTIVES:
 Namur Sandstone oil
 Hutton Sandstone oil

STRUCTURE:
 NE-SW trending anticline with prominent reverse fault on east flank.

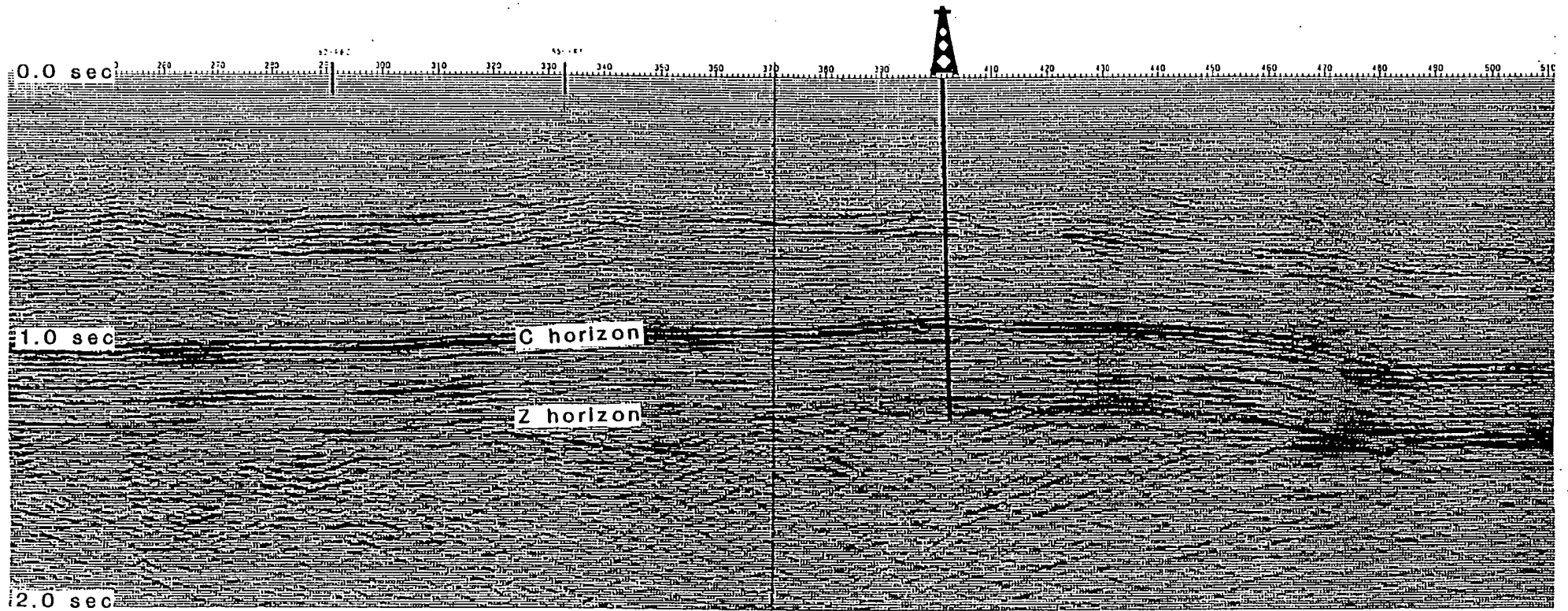
CLOSURE:
 Namur: 15,400 acres (to LCC)
 Pool: 7,660 acres
 % Area fill: 50%

POTENTIAL RESERVES: 46 MMSTB Rec.
 Assuming:
 Porosity = 15 %
 Net Pay = 20 ft.
 Area = 7,660 acres
 Shrinkage Factor = 0.90
 SW = 30 %
 Recovery = 40 %

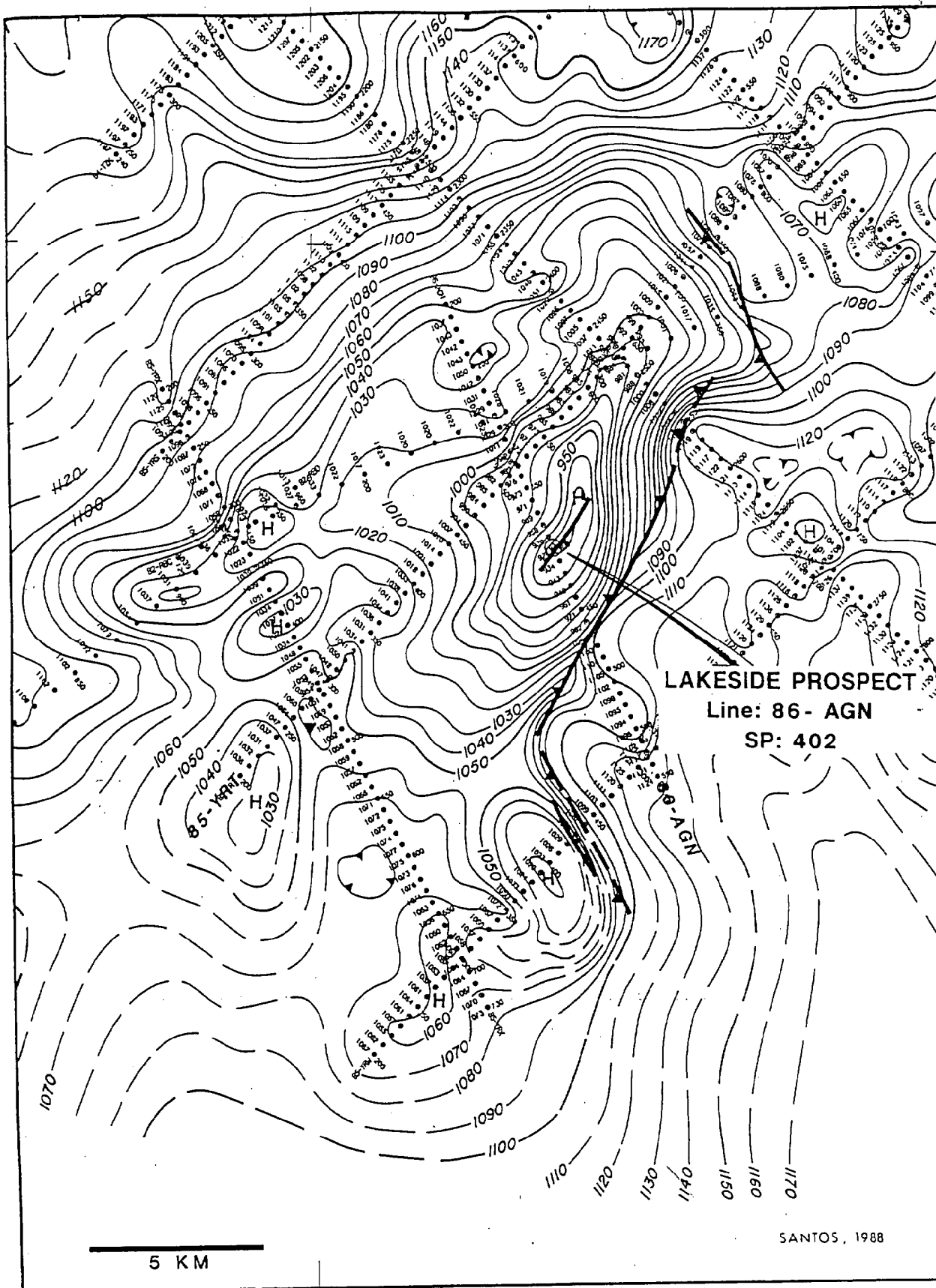
COMMENTS:
 Anomalous saline water recovery on trend suggests proximity to oil accumulation.

DATA SOURCES:
 SANTOS

PROPOSED
LOCATION



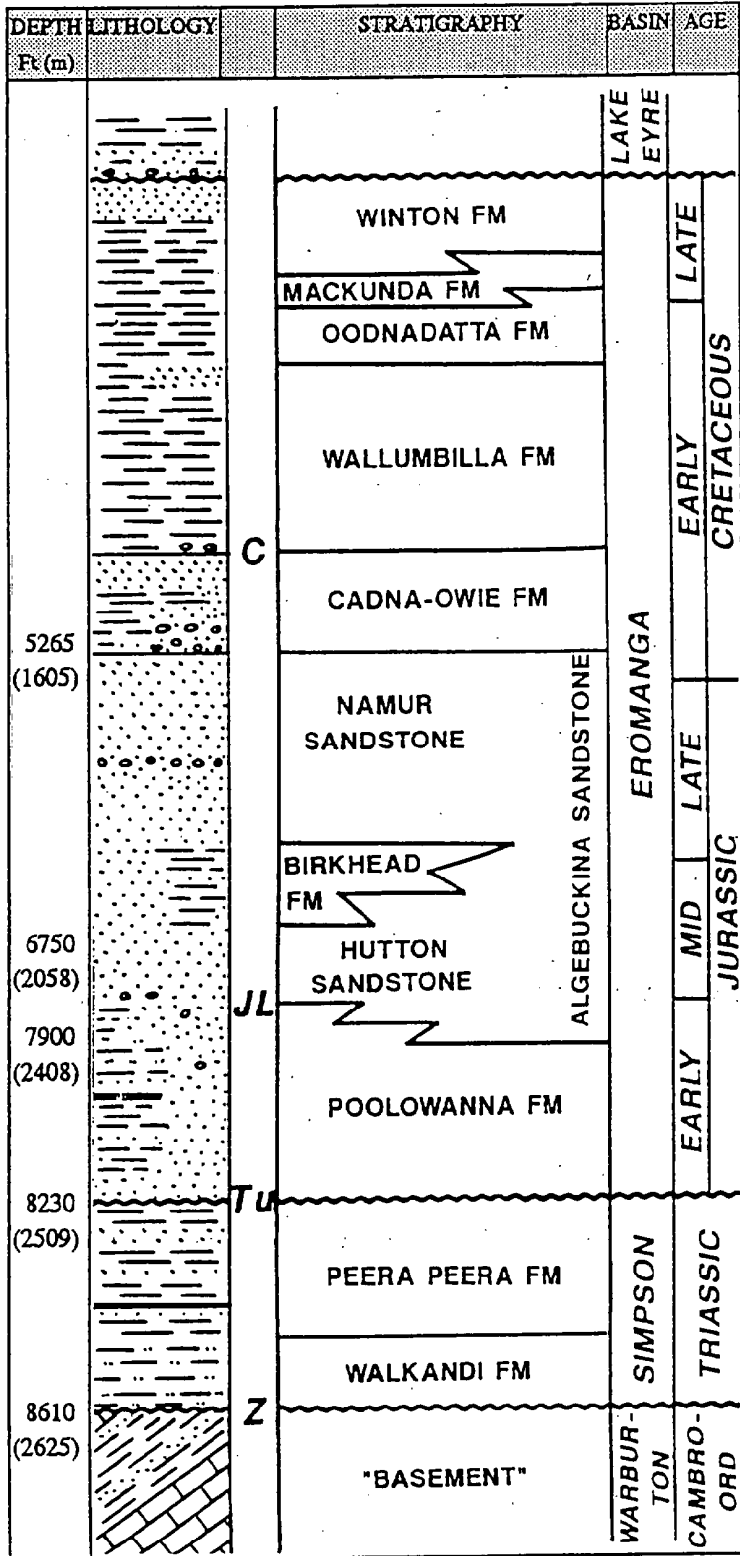
LAKESIDE PROSPECT
1986 FLETCHER SEISMIC SURVEY
86-AGN SEISMIC SECTION



LAKESIDE PROSPECT
1986 FLETCHER SEISMIC SURVEY
"C" TIME STRUCTURE

SCHEMATIC STRATIGRAPHIC SUMMARY

PEDRINNA



BASIN: EROMANGA
 TENEMENT: PEL 49
 OPERATOR: FELSTE A PTY. LTD.

LATITUDE: 27 05'
 LONGITUDE: 137 30'
 SEISMIC LINE: 79-WDS SP: 359
 TD: 8,900 Ft 2,713 (m)
 DRILLING TIME: 30 Days
 DISTANCE TO MOOMBA: 280 km

OBJECTIVES:
 PRIMARY:
 Poolowanna Fm (Ss) oil - 7900'
 Peera Peera Fm (Ss) oil - 8230'
 SECONDARY:
 Namur Ss oil - 5265'
 Hutton Ss oil - 6750'

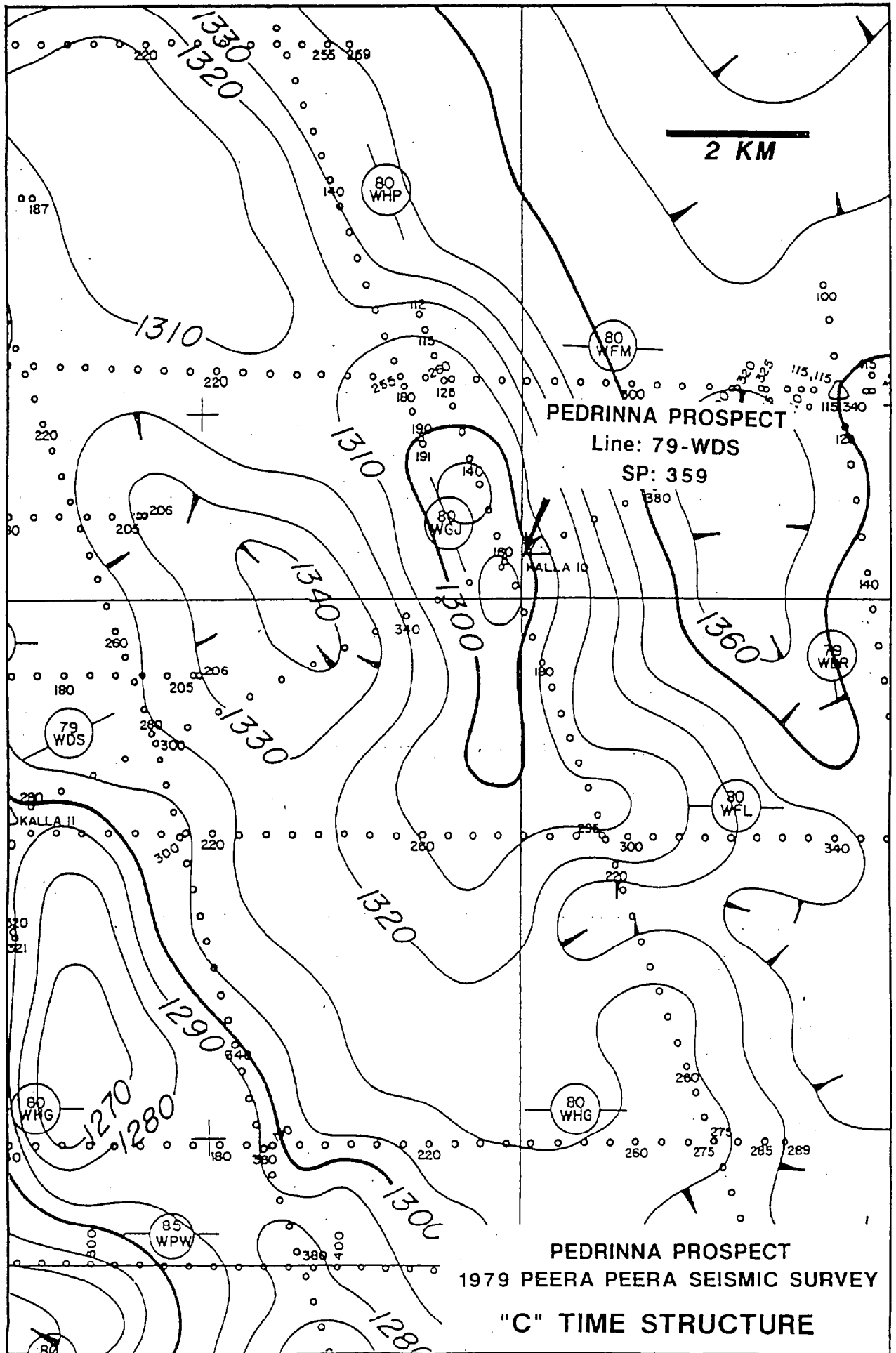
STRUCTURE:
 NW-trending anticline on southern flank of Poolowanna Trough.
 Extensive basement faulting.

CLOSURE:
 Poolowanna: 3265 acres (to LCC)
 Pool: 1,633 acres
 % Area fill: 50%

POTENTIAL RESERVES: 14.3 MMSTB Rec
 Assuming:
 Porosity = 15%
 Net Pay = 30 ft.
 Area = 1,633 acres
 Shrinkage Factor = 0.90
 SW = 30%
 Recovery = 40%

COMMENTS:
 Shows (fluor. and cut) in Miandana 1 located 9 km west. Shallower seismic anomalies relate to basement blocks.

DATA SOURCES:
 Delhi Petroleum
 SANTOS



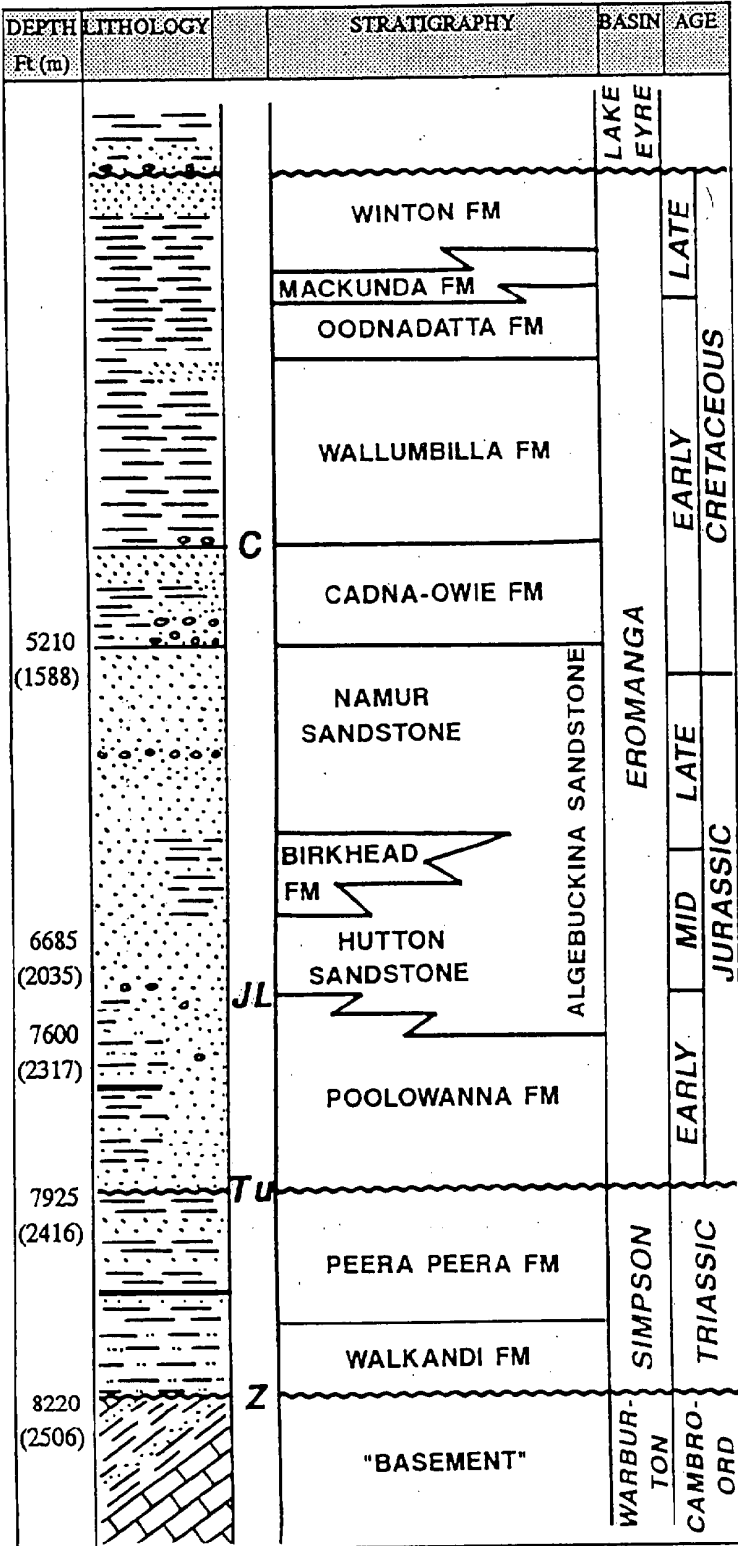
2 KM

PEDRINNA PROSPECT
Line: 79-WDS
SP: 359

PEDRINNA PROSPECT
1979 PEERA PEERA SEISMIC SURVEY
"C" TIME STRUCTURE

SCHEMATIC STRATIGRAPHIC SUMMARY

MIAMIANA



BASIN: EROMANGA
 TENEMENT: PEL 49
 OPERATOR: FELSTE A PTY. LTD.
 LATITUDE: 27 11'
 LONGITUDE: 137 28'
 SEISMIC LINE: 80-WFK SP: 208
 TD: 8,500 Ft 2,590 (m)
 DRILLING TIME: 30 Days
 DISTANCE TO MOOMBA: 280 km

OBJECTIVES:
 PRIMARY:
 Poolowanna Fm (Ss) oil - 7600'
 Peera Peera Fm (Ss) oil - 7925'
 SECONDARY:
 Namur Ss oil - 5210'
 Hutton Ss oil - 6685'

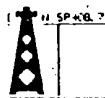
STRUCTURE:
 Major NW-trending anticline on southern flank of Poolowanna Trough.
 Extensive basement faulting.

CLOSURE:
 Namur Ss: 13,800 acres (to LCC)
 Pool: 6,900 acres
 % Area fill: 50%

POTENTIAL RESERVES: 60.5 MMSTB Rec
 Assuming:
 Porosity = 15%
 Net Pay = 30 ft.
 Area = 6,900 acres
 Shrinkage Factor = 0.90
 SW = 30%
 Recovery = 40%

COMMENTS:
 Shows (fluor. and cut) in Miamiiana 1 located 16 km NW. Peera Peera Ss channels cut into basement on structure on two seismic lines.

DATA SOURCES:
 Delhi Petroleum
 SANTOS



0.0 sec

170 180 190 200 210 220 230 240 250 260

1.0 sec

2.0 sec

C horizon

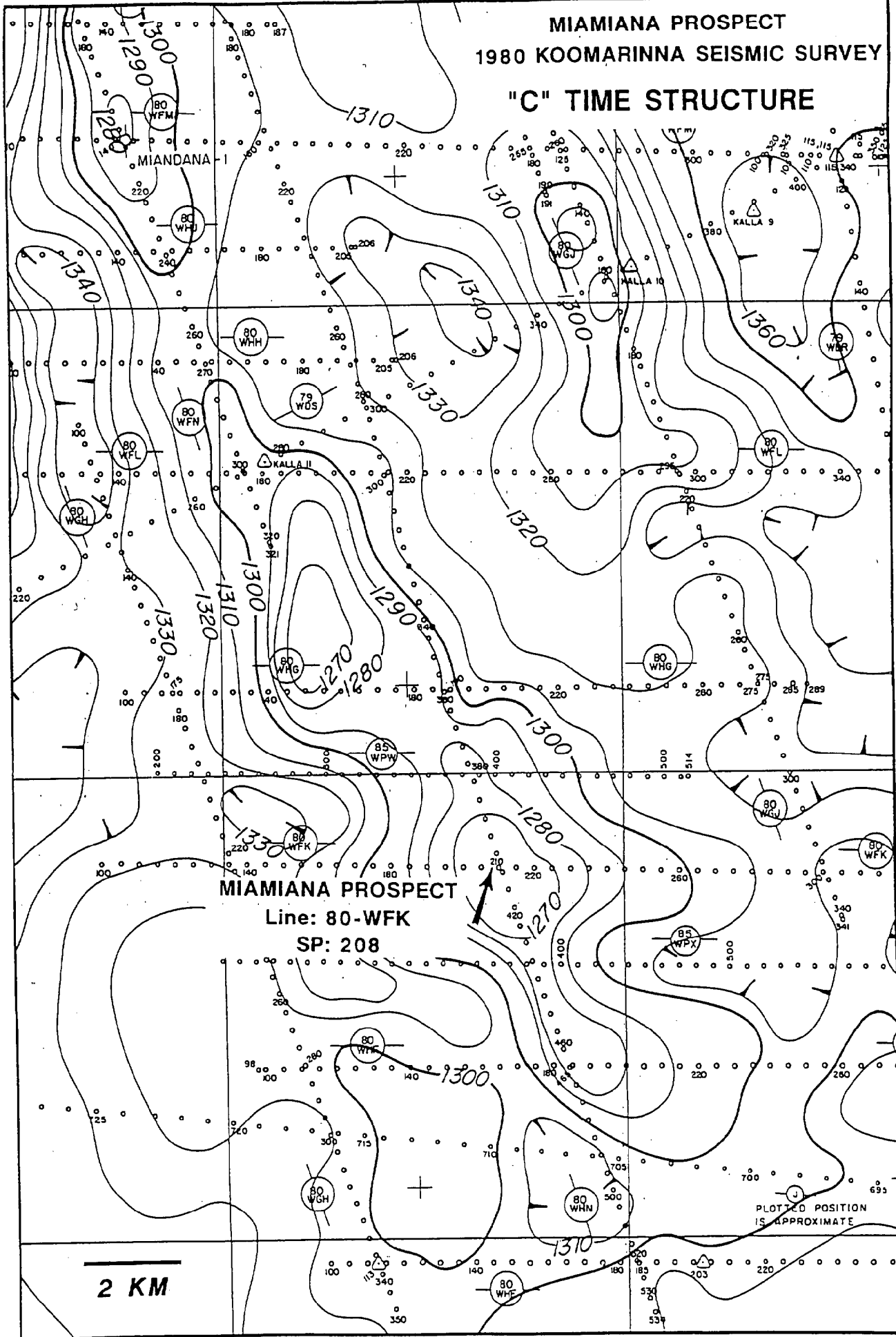
Poolowanna JL

Z horizon

MIAMIANA PROSPECT
1980 KOOMARINNA SEISMIC SURVEY
80-WFK SEISMIC SECTION

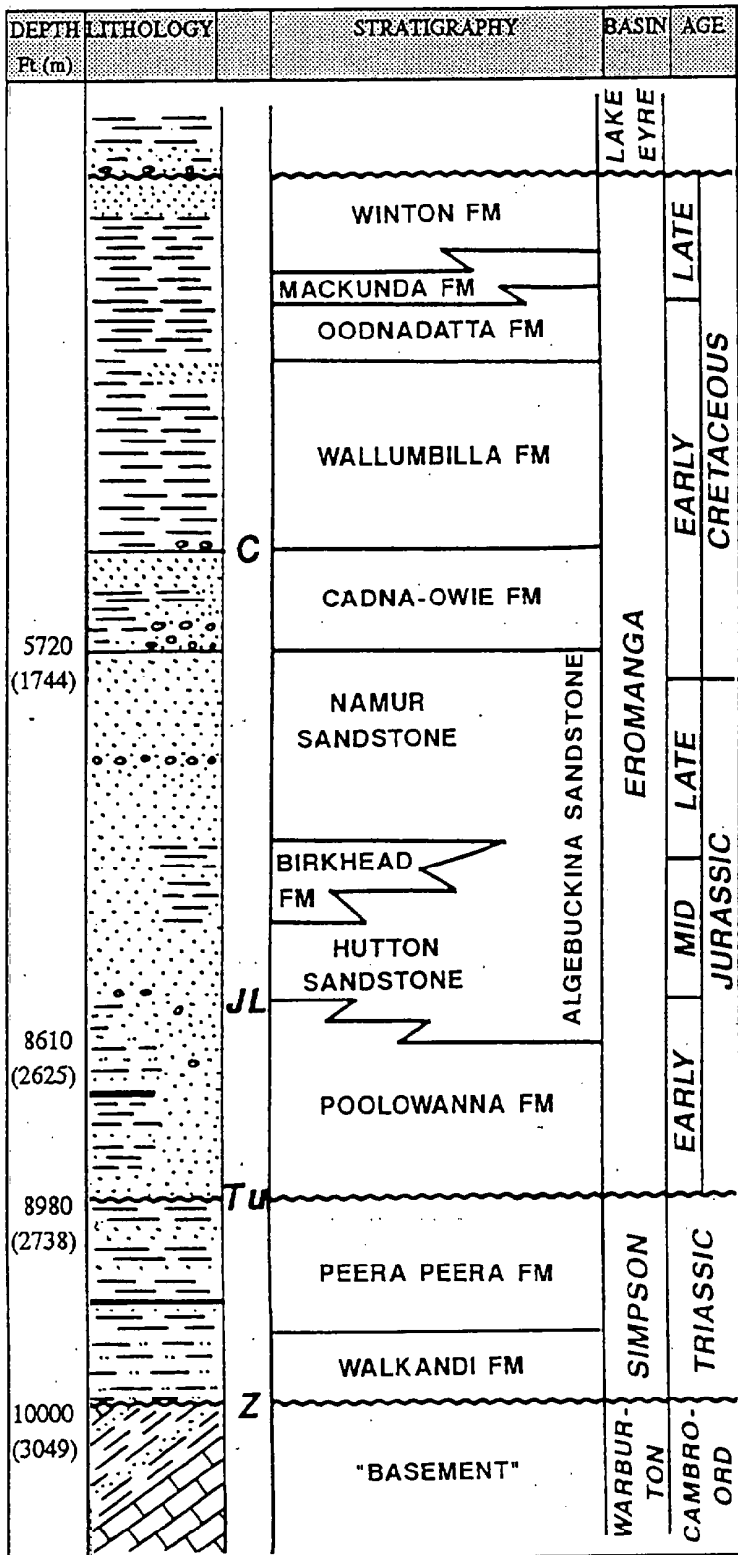
MIAMIANA PROSPECT
1980 KOOMARINNA SEISMIC SURVEY

"C" TIME STRUCTURE



SCHEMATIC STRATIGRAPHIC SUMMARY

PENDULLA



BASIN: EROMANGA

TENEMENT: PEL 49

OPERATOR: FELSTEPA PTY. LTD.

LATITUDE: 26 31'

LONGITUDE: 137 29'

SEISMIC LINE: 80-WFX SP: 209

TD: 10500 Ft. 3,200 (m)

DRILLING TIME: 35 Days

DISTANCE TO MOOMBA: 320 km

OBJECTIVES:

Poolowanna Fm (Ss) oil

Peera Peera Fm (Ss) oil

STRUCTURE:

NW-SE trending anticline in central Poolowanna Trough

CLOSURE:

Poolowanna Fm: 1050 acres (to LCC)

Pool: 787 acres

% Area fill: 75%

POTENTIAL RESERVES: 4.7 MMSTB Rec.

Assuming:

Porosity = 15%

Net Pay = 20 ft.

Area = 787 acres

Shrinkage Factor = 0.90

SW = 30%

Recovery = 40%

COMMENTS:

Poolowanna 1 oil recovery (96 BOPD)

located 22km ENE; numerous shows

(flour. and cut) reported from Walkandi 1

located 4 km SW.

DATA SOURCES:

Delhi Petroleum

SANTOS

EX-102 SP113

EX-102 SP212

EX-102 SP314

120

140

160

180

200

220

240

260

280

300

320

340

360

380

400

0.0 sec

1.0 sec

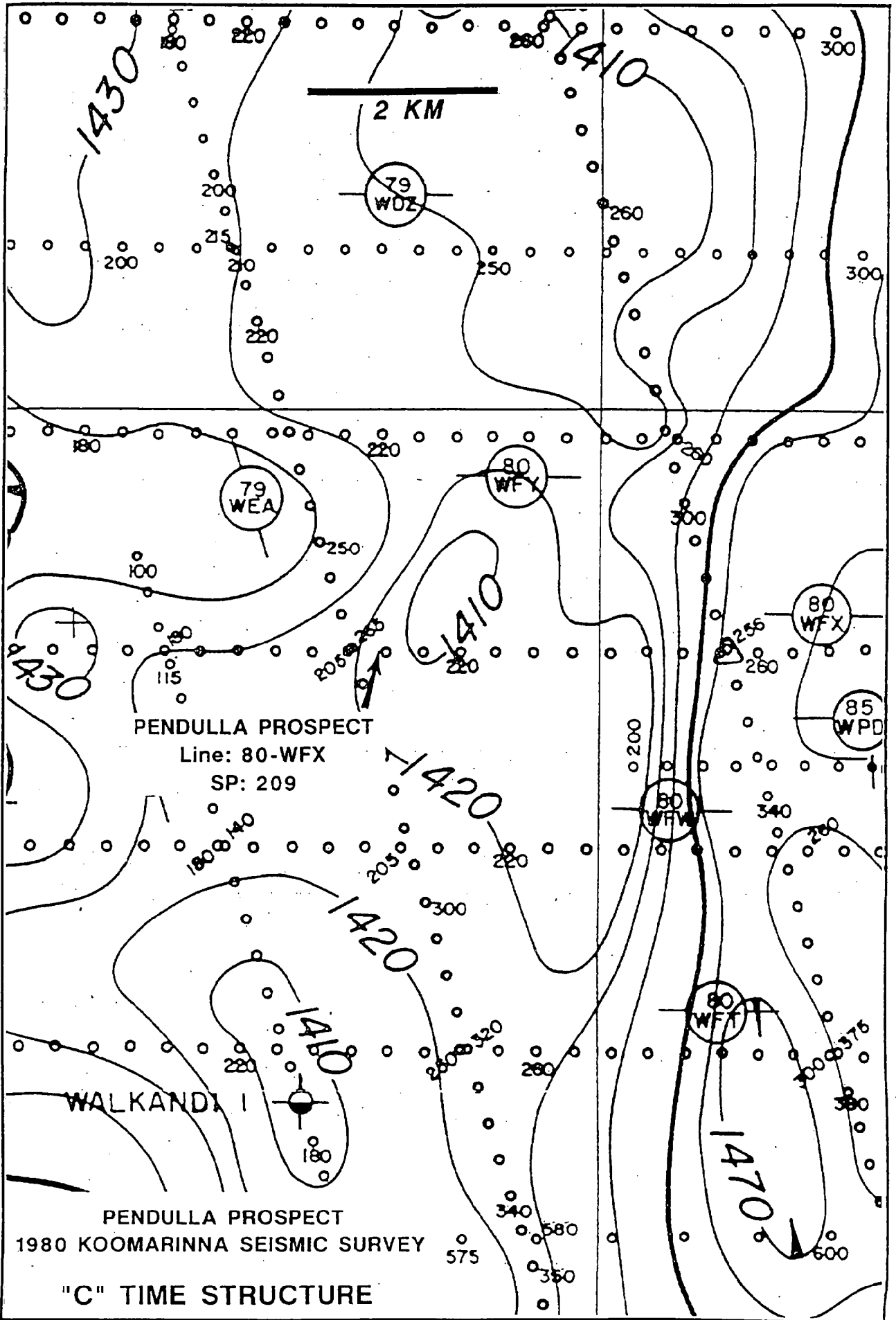
2.0 sec

C horizon

JL Poolowanna

Z horizon

PENDULLA PROSPECT
1980 KOOMARINNA SEISMIC SURVEY
80-WFX SEISMIC SECTION



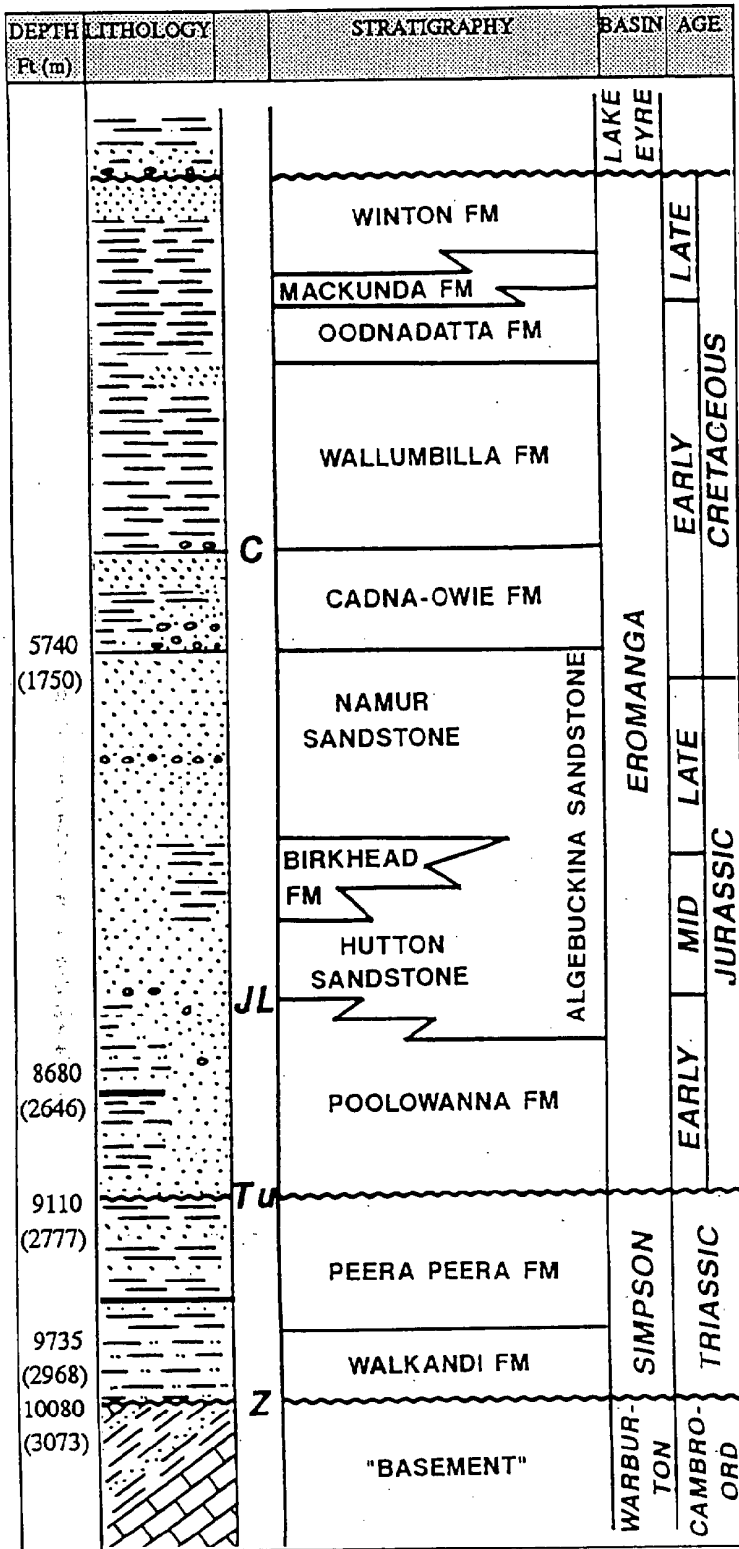
PENDULLA PROSPECT
 1980 KOOMARINNA SEISMIC SURVEY

"C" TIME STRUCTURE

SCHEMATIC STRATIGRAPHIC SUMMARY

PROSPECT 7

PENUNGA



BASIN: EROMANGA
 TENEMENT: PEL 49
 OPERATOR: FELSTE A PTY. LTD.

LATITUDE: 26 37'
 LONGITUDE: 137 26'
 SEISMIC LINE: 79-WDY SP: 137

TD: 10500 3,200 (m)
 DRILLING TIME: 35 Days
 DISTANCE TO MOOMBA: 320 km

OBJECTIVES:
 Poolowanna Fm (Ss) oil
 Peera Peera Fm (Ss) oil

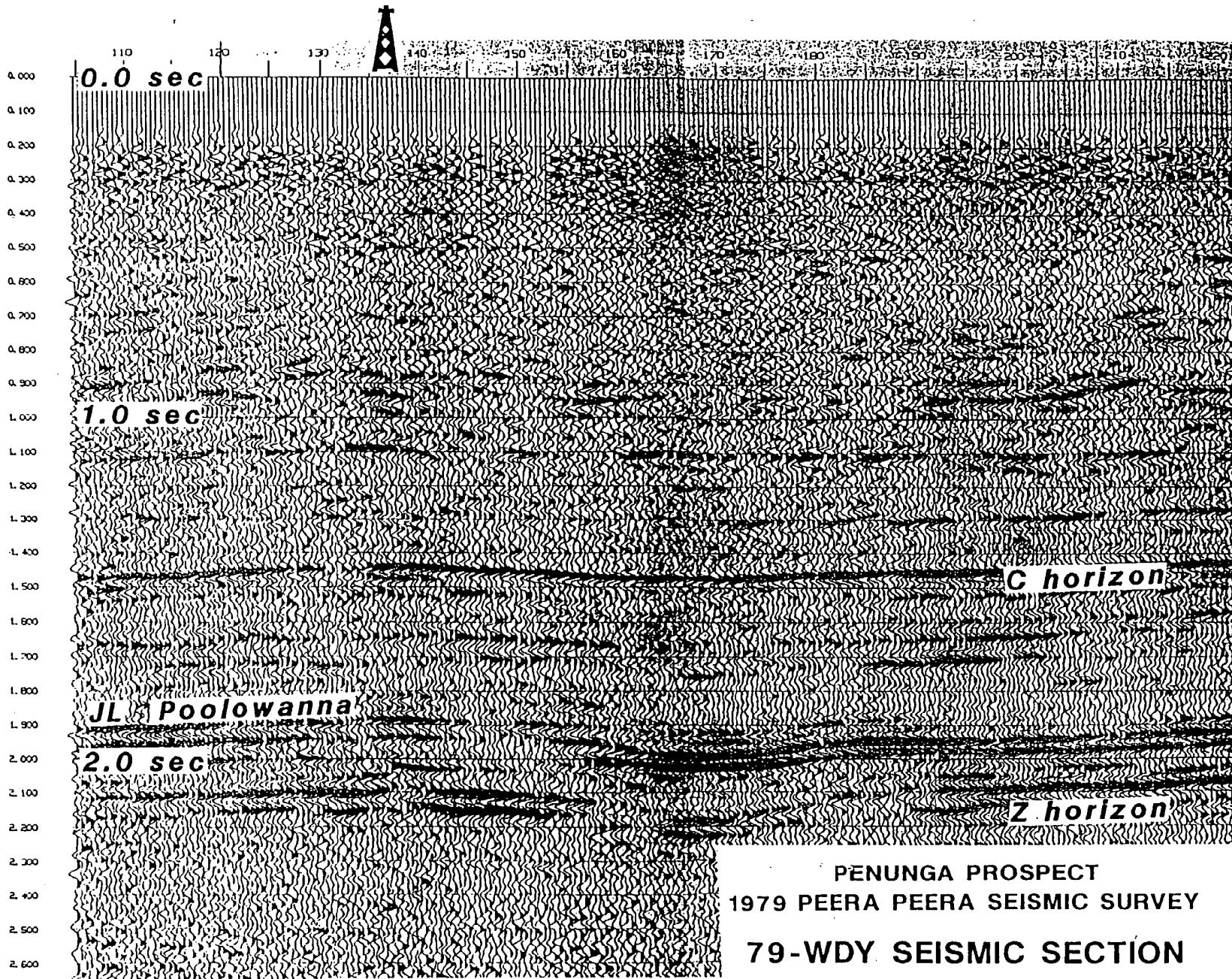
STRUCTURE:
 NW-SE trending anticline in central Poolowanna Trough

CLOSURE:
 Poolowanna Fm: 2500 acres
 Pool: 1875 acres
 % Area fill: 75%

POTENTIAL RESERVES: 16.7 MMSTB Rec
 Assuming:
 Porosity = 15%
 Net Pay = 30 ft.
 Area = 1875 acres
 Shrinkage Factor = 0.90
 SW = 30%
 Recovery = 40%

COMMENTS:
 Poolowanna 1 oil recovery (96 BOPD) located 30km NE; numerous shows (flour. and cut) reported from Walkandi 1 located 8 km NE.

DATA SOURCES:
 Delhi Petroleum
 SANTOS



PENUNGA PROSPECT
1979 PEERA PEERA SEISMIC SURVEY
79-WDY SEISMIC SECTION

