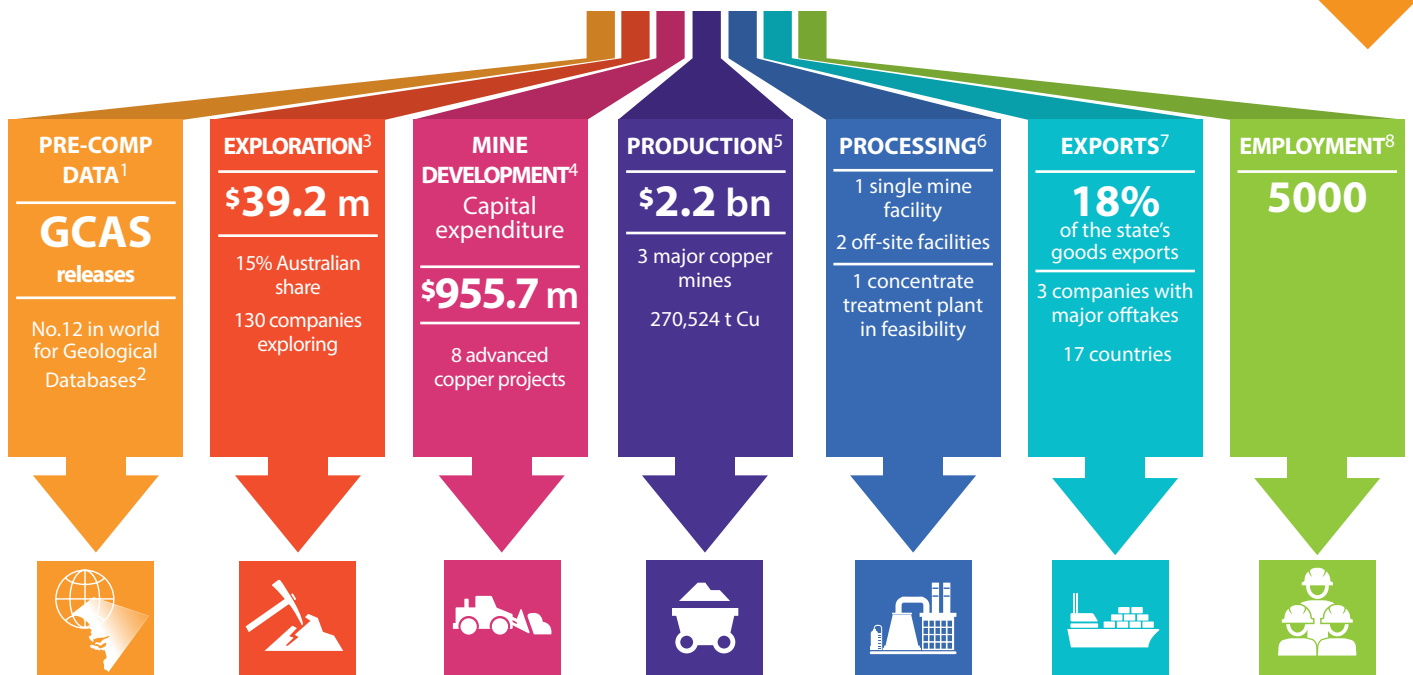


# South Australia's Copper Scorecard

## Copper Strategy Update



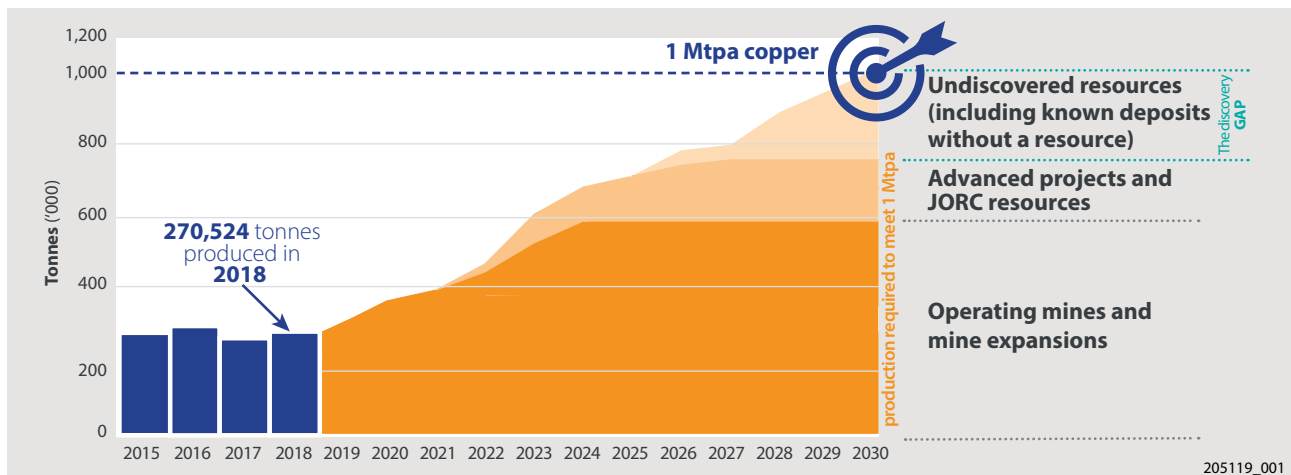
### COPPER SCORECARD 2018



1. Gawler Craton Aerial Survey; 2. Fraser Institute Annual, Survey of Mining Companies 2018; 3. ABS Cat. 8412.0; 4. Company releases; 5. MRD Production Returns; 6. Nyrstar and Adchem; 7. ABS custom dataset; 8. MRD survey-direct employment; 9. Econsearch Mining Equipment Technology Services (METS) multiplier 1.3

## Tracking toward 1 Mtpa Copper to the World

Mine expansions, new mines and advanced projects have progressed during the year, positioning the State for increased future production and exports. Exploration remains an important action for finding the next copper mine.



# Copper project pipeline in South Australia

## EXPLORATION

(positive drilling intercepts, assays or anomalies)

**\$39.2 million**

copper exploration in 2018

130 companies with  
400+ EXPLORATION LICENCES for copper

## ADVANCED PROJECTS

(JORC resource, feasibility studies underway)

**\$2 billion**

potential capital expenditure - 8 projects

## MAJOR MINES

(producing and exporting copper cathode & copper in concentrate)

**270,524t**

**\$2.2 billion**

in 2018\*\*

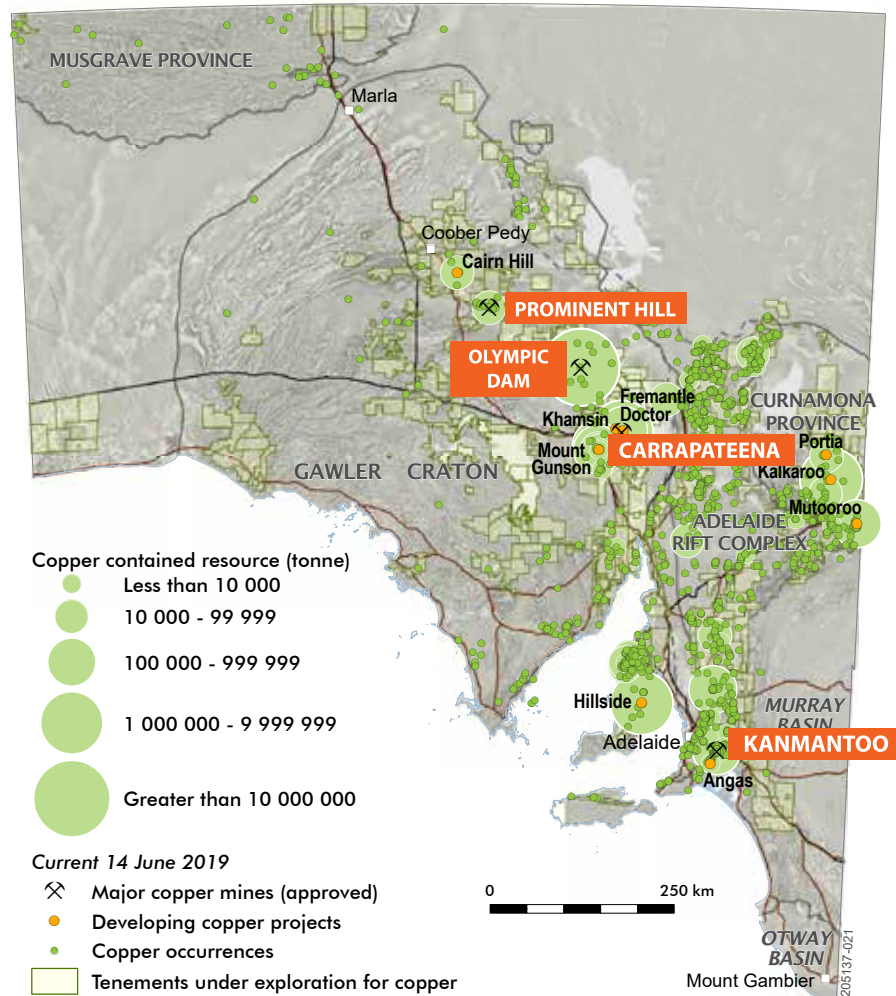
Olympic Dam

Prominent Hill

Kanmantoo

Carrapateena

**1 Mtpa COPPER to the WORLD in the FUTURE**



## \*\*Production from South Australia's copper mines

In 2018, South Australia achieved production of 270,524 tonnes of copper valued at \$2.2 billion. This includes 123,233 tonnes of copper concentrate valued at \$901 million and 138,451 tonnes of copper cathode valued at \$1.1 billion.

Mine	Company	2017 actual* (tonnes)	2018 actual* (tonnes)	2019 company guidance (tonnes)
<b>Olympic Dam</b> (copper cathode)	BHP	142,400	147,400	170,000 - 180,000 (FY 2018)
<b>Prominent Hill</b> (copper in concentrate)	OZ Minerals	112,008	110,111	95,000-105,000 (FY 2019)
<b>Carrapateena</b> (copper in concentrate)	OZ Minerals	—	—	2,000-4,000 (FY 2019)
<b>Kanmantoo</b> (copper in concentrate)	Hillgrove Resources	14,802	22,589	13,000-15,000 (FY 2019)
Production from other mines (aggregated)	—	<100	<100	—

\*Production volume reported by companies may not sum to the total mine gate production sale value aggregated by the Department for Energy and Mining