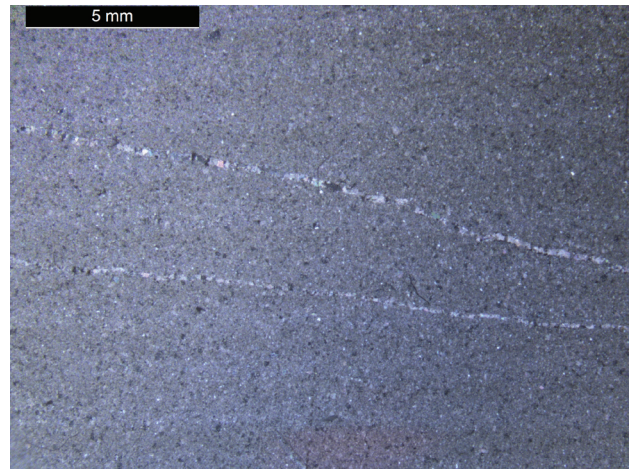
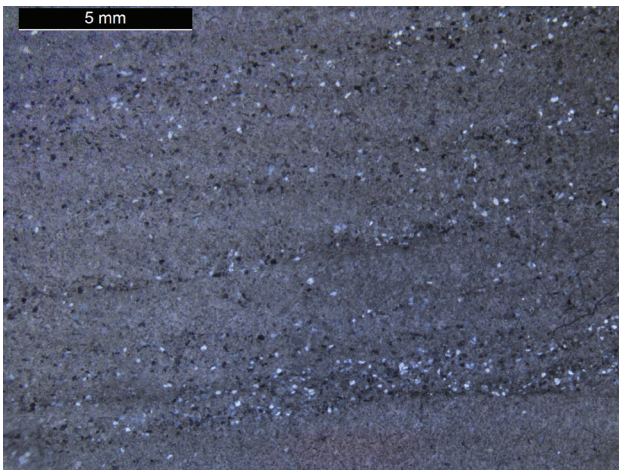


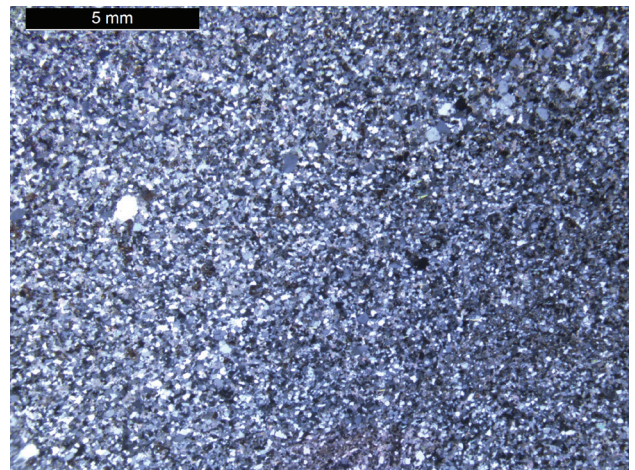
9(a) Lime mudstone, lithofacies 1. (Photo 418418)



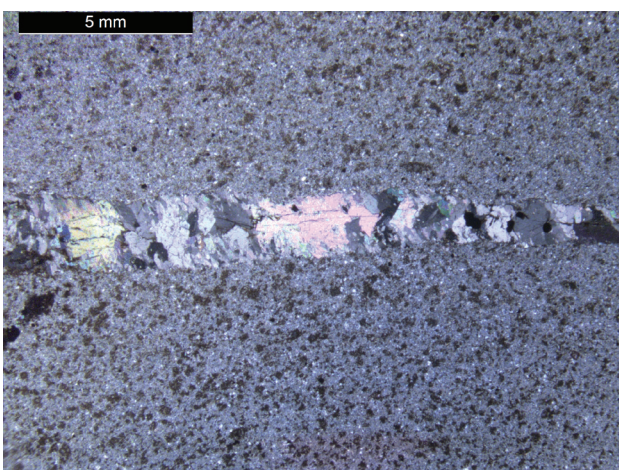
9(b) Silty limestone, lithofacies 2. (Photo 418419)



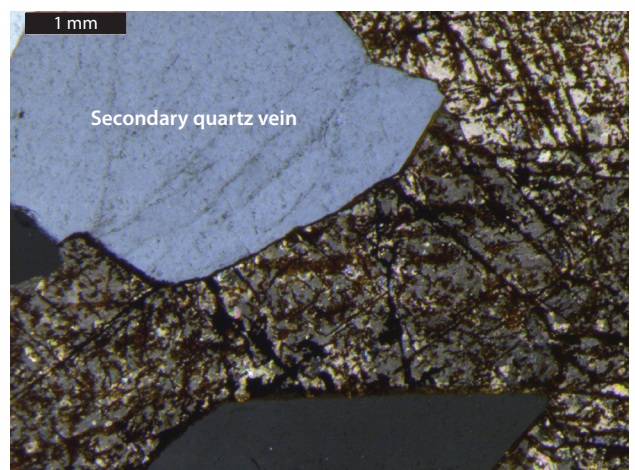
9(c) Silty limestone, lithofacies 3. (Photo 418420)



9(d) Siltstone, lithofacies 4. (Photo 418421)



9(e) Silty dolomite, lithofacies 5. (Photo 418422)



9(f) Calcite veins crosscutting lithofacies 4. (Photo 418423)

Figure 9 Photomicrographs (cross-polarised light) of lithofacies from inclusion 3 (stratigraphic section 3), Patawarta Diapir. Each image corresponds to the lithofacies in Figures 10–11 and Tables 3–6.