

Water services installed in proximity of other services

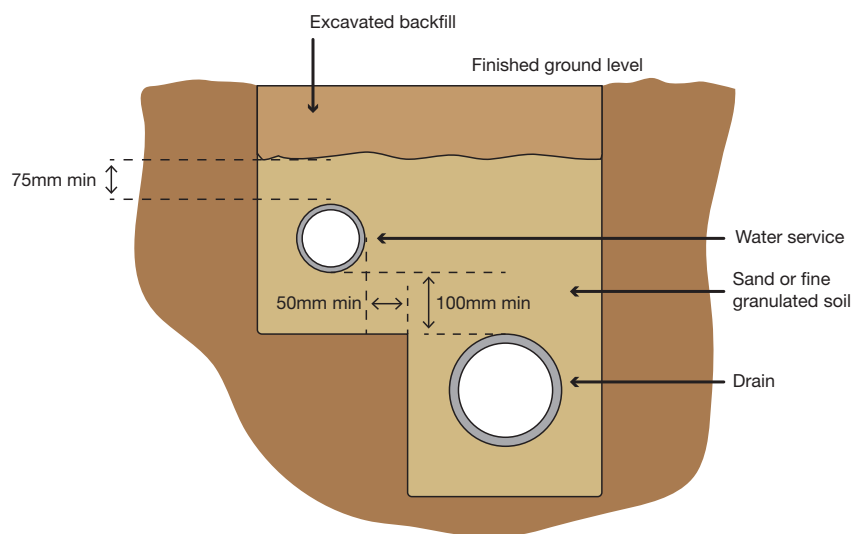
Plumbing Advisory Note

Revised January 2019

Plumbing services installed in close proximity to other services must not impact on the function of any of the services. Incorrect installations can lead to dangerous or fatal situations when carrying out maintenance or modifications to existing services.

When laying services, plumbers should ensure that:

- no potential nuisance or safety hazard is created for people when services are installed either above or below ground
- appropriate separation distances are provided (both horizontally and vertically) between services
- when services laid in the same trench, the smaller sized service is located on shelf or ledge
- the installation doesn't interfere with the normal operation of a building.



Example of laying water supply pipe in the same trench as a drain

Performance requirements

The *National Construction Code Series Volume Three, Plumbing Code of Australia (PCA)*, specifies the objectives and performance requirements related to the installation of Water Services including Heated Water Services.

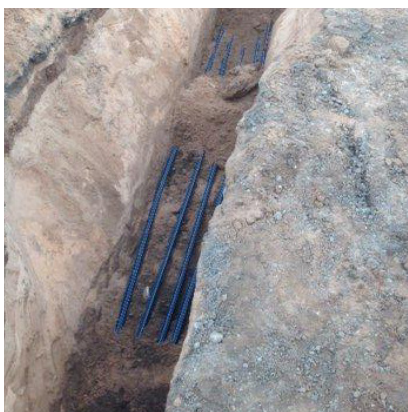
AS/NZS 3500.1, AS/NZS 3500.2, AS/NZS 3500.4 Water Services are the 'deemed to satisfy' documents listed in the PCA, which contains sections on water services and sanitary plumbing and drainage that are installed in proximity to other services.

Continued over page...

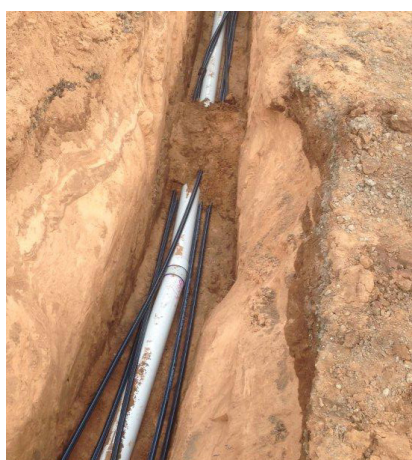
It is recommended that builders advise sub-contractors of the specific requirements that need to be followed when trenches are shared by various trades. Similarly, contractors should liaise with other trades prior to undertaking trenching work to ensure that solutions put in place are compliant.



Compliant non-drinking water separation



Compliant pipe work installation



Non-compliant pipe work installation



Non-compliant pipe work installation

Examples of installations needing consideration

The following service installation examples are common situations that require careful consideration:

- Above-ground electrical conduit, wire, cable or consumer pipes
- Non-drinking water including recycled water (above and below ground)
- Underground electrical supply cables or consumer gas pipes
- Underground electrical earthing electrode
- Underground communication cable
- Underground drains
- Other underground services
- Crossover of other underground services
- Clearance from underground obstructions

Contact the Office of the Technical Regulator for more information

Online sa.gov.au/otrplumbing

Email otr.plumbregulator@sa.gov.au

Phone 1300 760 311



**Government of
South Australia**