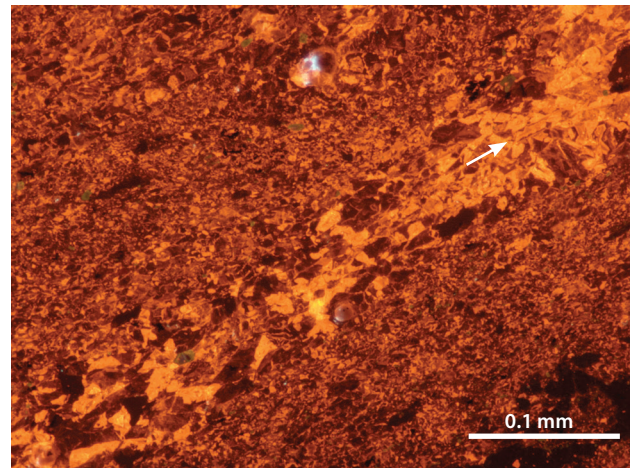
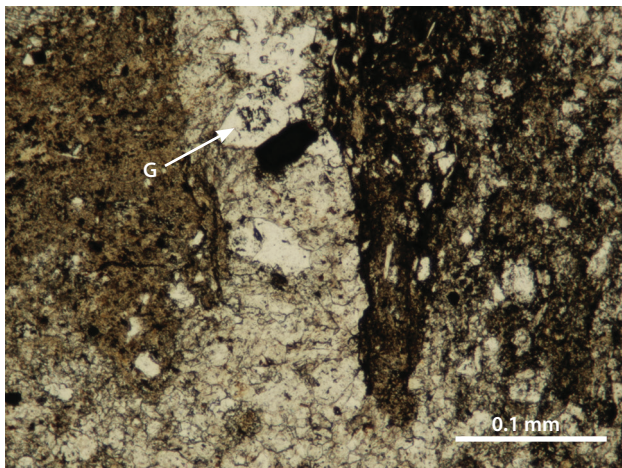


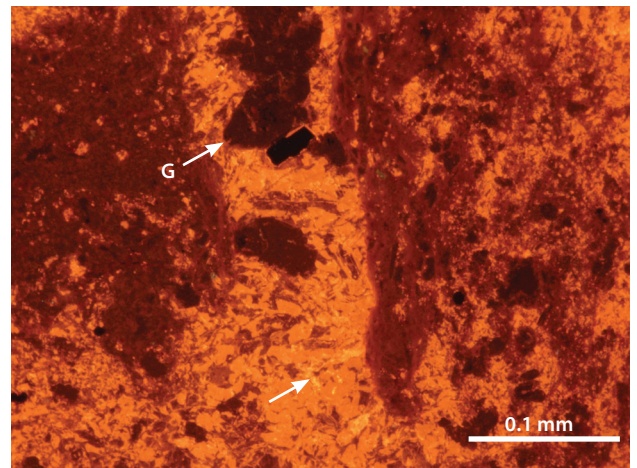
15(a) Lime mudstone, lithofacies 1, in cross-polarised light. (Photo 418424)



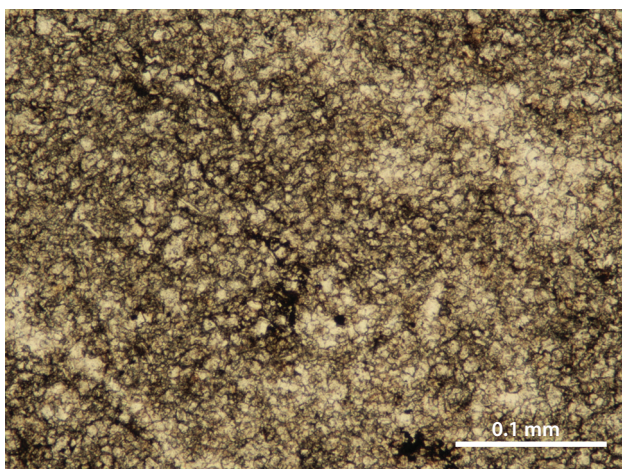
15(b) Lime mudstone, lithofacies 1, under cathodoluminescence. Lime mudstone (brown/orange fine-grained crystalline matrix) with crosscutting calcite-rich (orange-yellow) veins (arrow marks diagenetic alteration). (Photo 418425)



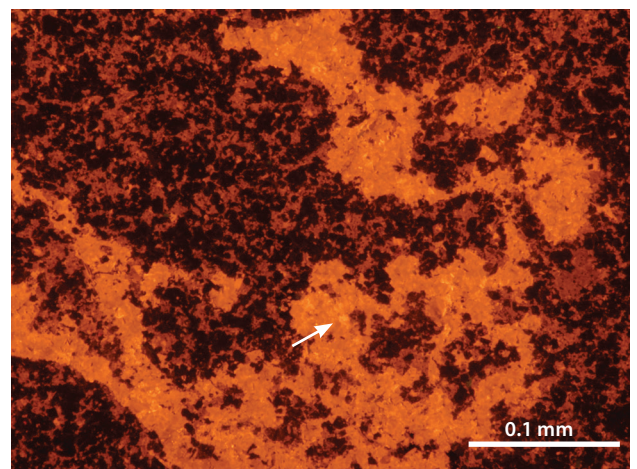
15(c) Silty limestone, lithofacies 3, in cross-polarised light (gypsum, G). (Photo 418426)



15(d) Silty limestone, lithofacies 3, under cathodoluminescence. Silty limestone (orange/dark orange matrix) with crosscutting calcite-rich (orange-yellow) veins (arrow marks diagenetic alteration) and quartz replacing gypsum (G). (Photo 418427)



15(e) Silty dolomite, lithofacies 5, in cross-polarised light. (Photo 418428)



15(f) Silty dolomite, lithofacies 5, under cathodoluminescence. Silty dolomite (dark brown/black) matrix with crosscutting calcite-rich (orange-yellow) veins (marked by arrow). (Photo 418429)

Figure 15 Photomicrographs of lithofacies from inclusion 3 (stratigraphic section 3), Patawarta Diapir. Each image corresponds to the lithofacies in Figures 8–11; Tables 3–6.