

**INDEX OF DOCUMENTS HELD ON THE PUBLIC REGISTER FOR  
GAS STORAGE RETENTION LICENCE GSRL 252**

---

1. 2 February 2024 Grant of Gas Storage Retention Licence GSRL 252.  
  
Interests:

Santos Limited	40.7%
Delhi Petroleum Pty Ltd	20.21%
Beach Energy (Operations) Limited	13.19%
Vamgas Pty Ltd	8.51%
Santos (NARNL Cooper) Pty Ltd	4.75%
Bridge Oil Developments Pty Ltd	3.99%
Alliance Petroleum Australia Pty Ltd	3.97%
Basin Oil Pty Ltd	2.10%
Reef Oil Pty Ltd	1.97%
Santos Petroleum Pty Ltd	0.40%
Santos (BOL) Pty Ltd	0.21%
  
2. 2 February 2024 Memorandum entering GSRL 252 on the public register.
  
3. 8 February 2024 Gazettal of grant of licence.

## MENTAL HEALTH ACT 2009

*Authorised Medical Practitioner*

NOTICE is hereby given in accordance with Section 93(1) of the *Mental Health Act 2009* that the Chief Psychiatrist has determined the following person as an Authorised Medical Practitioner:

Deval Patel

A determination will be automatically revoked upon the person being registered as a specialist psychiatrist with the Australian Health Practitioner Regulation Agency and as a fellow of the Royal Australian and New Zealand College of Psychiatrists.

Dated: 2 February 2024

ASSOCIATE PROFESSOR MELANIE TURNER  
Acting Chief Psychiatrist

## PETROLEUM AND GEOTHERMAL ENERGY ACT 2000

*Grant of Gas Storage Retention Licence—GSRL 252*

Notice is hereby given that the undermentioned Gas Storage Retention Licence has been granted under the provisions of the *Petroleum and Geothermal Energy Act 2000*, pursuant to delegated powers dated 27 November 2023.

No of Licence	Licensees	Locality	Area in km <sup>2</sup>	Reference
GSRL 252	Santos Limited Vamgas Pty Ltd Alliance Petroleum Australia Pty Ltd Reef Oil Pty Ltd Santos Petroleum Pty Ltd Bridge Oil Developments Pty Ltd Santos (BOL) Pty Ltd Beach Energy (Operations) Limited Delhi Petroleum Pty Ltd Basin Oil Pty Ltd Santos (NARNL Cooper) Pty Ltd	Cooper Basin	683	MER-2023/0197

*Description of Areas*

All that part of the State of South Australia, bounded as follows:

## AREA 1

Commencing at a point being the intersection of latitude 27°41'00"S GDA94 and longitude 139°54'00"E GDA94, thence east to longitude 140°00'00"E GDA94, south to latitude 27°42'00"S GDA94, east to longitude 140°01'05"E GDA94, south to latitude 27°43'15"S AGD66, west to longitude 140°01'00"E AGD66, south to latitude 27°44'40"S AGD66, east to longitude 140°01'10"E AGD66, south to latitude 27°45'00"S Clarke1858, east to longitude 140°01'20"E AGD66, south to latitude 27°45'20"S AGD66, east to longitude 140°01'40"E AGD66, south to latitude 27°45'40"S AGD66, east to longitude 140°01'50"E AGD66, south to latitude 27°45'50"S AGD66, east to longitude 140°02'00"E AGD66, south to latitude 27°46'00"S AGD66, east to longitude 140°02'52"E AGD66, north to latitude 27°45'00"S Clarke1858, east to longitude 140°04'05"E AGD66, south to latitude 27°45'25"S AGD66, east to longitude 140°04'40"E AGD66, south to latitude 27°45'40"S AGD66, west to longitude 140°04'30"E AGD66, south to latitude 27°46'10"S AGD66, west to longitude 140°04'20"E AGD66, south to latitude 27°47'20"S AGD66, west to longitude 140°03'40"E AGD66, south to latitude 27°47'50"S AGD66, west to longitude 140°03'30"E AGD66, south to latitude 27°50'20"S AGD66, west to longitude 140°03'20"E AGD66, south to latitude 27°51'10"S AGD66, east to longitude 140°03'30"E AGD66, south to latitude 27°52'00"S AGD66, east to longitude 140°03'50"E AGD66, south to latitude 27°52'10"S AGD66, east to longitude 140°04'20"E AGD66, south to latitude 27°52'20"S AGD66, east to longitude 140°04'50"E AGD66, south to latitude 27°52'40"S AGD66, west to longitude 140°04'40"E AGD66, south to latitude 27°52'50"S AGD66, west to longitude 140°04'30"E AGD66, south to latitude 27°53'00"S AGD66, west to longitude 140°04'20"E AGD66, south to latitude 27°53'10"S AGD66, west to longitude 140°04'10"E AGD66, south to latitude 27°53'20"S AGD66, west to longitude 140°04'00"E AGD66, south to latitude 27°53'30"S AGD66, west to longitude 140°03'40"E AGD66, south to latitude 27°53'40"S AGD66, west to longitude 140°03'30"E AGD66, south to latitude 27°54'00"S Clarke1858, west to longitude 140°02'00"E Clarke1858, south to latitude 27°55'00"S Clarke1858, west to longitude 140°01'10"E AGD66, north to latitude 27°53'40"S AGD66, east to longitude 140°01'20"E AGD66, north to latitude 27°53'30"S AGD66, east to longitude 140°01'40"E AGD66, north to latitude 27°53'20"S AGD66, east to longitude 140°01'50"E AGD66, north to latitude 27°53'10"S AGD66, east to longitude 140°02'00"E AGD66, north to latitude 27°52'10"S AGD66, north to longitude 140°01'40"E AGD66, north to latitude 27°52'05"S AGD66, west to longitude 140°00'40"E AGD66, north to latitude 27°51'40"S AGD66, west to longitude 140°00'00"E AGD66, north to latitude 27°51'20"S AGD66, west to longitude 139°59'20"E AGD66, north to latitude 27°50'20"S AGD66, west to longitude 139°54'30"E AGD66, north to latitude 27°49'30"S AGD66, west to longitude 139°53'10"E AGD66, south to latitude 27°50'00"S AGD66, west to longitude 139°53'00"E AGD66, south to latitude 27°50'50"S AGD66, west to longitude 139°52'30"E AGD66, south to latitude 27°51'50"S AGD66, west to longitude 139°52'10"E AGD66, south to latitude 27°52'20"S AGD66, west to longitude 139°51'20"E AGD66, south to latitude 27°57'00"S AGD66, east to longitude 139°58'00"E Clarke1858, south to latitude 27°59'00"S Clarke1858, west to longitude 139°57'00"E Clarke1858, south to latitude 28°00'00"S Clarke1858, west to longitude 139°56'00"E Clarke1858, south to latitude 28°02'00"S Clarke1858, west to longitude 139°55'00"E Clarke1858, south to latitude 28°03'50"S AGD66, west to longitude 139°54'30"E AGD66, south to latitude 28°04'00"S AGD66, west to longitude 139°54'20"E AGD66, south to latitude 28°04'20"S AGD66, west to longitude 139°54'10"E AGD66, south to latitude 28°05'00"S AGD66, west to longitude 139°45'40"E AGD66, north to latitude 28°02'30"S AGD66, west to longitude 139°45'20"E AGD66, north to latitude 28°02'10"S AGD66, west to longitude 139°45'00"E AGD66, north to latitude 28°01'30"S AGD66, west to longitude 139°44'40"E AGD66, north to latitude 27°54'55"S GDA94, west to longitude 139°43'46"E GDA94, north to latitude 27°53'00"S GDA94, east to longitude 139°49'30"E GDA94, north to latitude 27°51'55"S GDA94, east to longitude 139°50'10"E GDA94, north to latitude 27°51'05"S GDA94, east to longitude 139°50'25"E GDA94, north to latitude 27°50'35"S GDA94, east to longitude 139°50'35"E GDA94, north to latitude 27°49'55"S GDA94, east to longitude 139°51'25"E GDA94, north to latitude 27°49'40"S GDA94, east to longitude 139°52'00"E GDA94, north to latitude 27°49'15"S GDA94, west to longitude 139°51'35"E GDA94, north to latitude 27°49'10"S GDA94, west to longitude 139°51'25"E GDA94, north to latitude 27°48'55"S GDA94, east to longitude 139°51'45"E GDA94, north to latitude 27°48'30"S GDA94, west to longitude 139°51'25"E GDA94, north to latitude 27°47'45"S GDA94, west to longitude 139°51'20"E GDA94, north to latitude 27°47'35"S GDA94, west to longitude 139°51'15"E GDA94, north to latitude 27°47'30"S GDA94, west to longitude 139°51'10"E GDA94, north to latitude 27°47'20"S GDA94, west to longitude 139°50'45"E GDA94, north to latitude 27°46'50"S GDA94, west to longitude 139°50'25"E GDA94, north to latitude 27°46'30"S GDA94, west to longitude 139°50'15"E GDA94, north to latitude 27°46'00"S GDA94, east to longitude 139°52'00"E GDA94, south to latitude 27°46'55"S GDA94, east to longitude 139°54'55"E GDA94, north to latitude 27°46'35"S GDA94, east to longitude 139°55'00"E GDA94, north to latitude 27°46'25"S GDA94, east to longitude 139°55'05"E GDA94, north to latitude

27°46'15"S GDA94, east to longitude 139°55'30"E AGD66, south to latitude 27°46'30"S AGD66, east to longitude 139°56'30"E AGD66, north to latitude 27°46'00"S AGD66, east to longitude 139°57'10"E AGD66, north to latitude 27°45'50"S AGD66, east to longitude 139°57'40"E AGD66, north to latitude 27°45'30"S AGD66, east to longitude 139°58'00"E AGD66, south to latitude 27°45'40"S AGD66, east to longitude 139°58'20"E AGD66, north to latitude 27°45'30"S AGD66, east to longitude 139°58'30"E AGD66, north to latitude 27°45'20"S AGD66, east to longitude 139°58'40"E AGD66, north to latitude 27°45'00"S Clarke1858, east to longitude 139°59'40"E AGD66, north to latitude 27°43'50"S AGD66, west to longitude 139°59'20"E AGD66, north to latitude 27°43'30"S AGD66, west to longitude 139°58'30"E AGD66, north to latitude 27°43'20"S AGD66, west to longitude 139°56'50"E AGD66, south to latitude 27°43'30"S AGD66, west to longitude 139°56'10"E AGD66, south to latitude 27°44'30"S AGD66, west to longitude 139°55'50"E AGD66, north to latitude 27°44'20"S AGD66, west to longitude 139°55'20"E AGD66, south to latitude 27°44'30"S AGD66, west to longitude 139°55'00"E GDA94, north to latitude 27°42'00"S GDA94, west to longitude 139°54'00"E GDA94 and north to the point of commencement, but excluding the areas bounded as follows -

Commencing at a point being the intersection of latitude 27°46'10"S AGD66 and longitude 139°57'20"E AGD66, thence east to longitude 139°58'20"E AGD66, south to latitude 27°47'00"S AGD66, east to longitude 139°59'00"E AGD66, south to latitude 27°47'10"S AGD66, east to longitude 139°59'20"E AGD66, south to latitude 27°47'20"S AGD66, east to longitude 139°59'40"E AGD66, south to latitude 27°47'30"S AGD66, east to longitude 140°02'00"E AGD66, north to latitude 27°47'10"S AGD66, east to longitude 140°03'10"E AGD66, south to latitude 27°47'30"S AGD66, east to longitude 140°03'20"E AGD66, south to latitude 27°47'50"S AGD66, west to longitude 140°03'10"E AGD66, south to latitude 27°48'00"S AGD66, west to longitude 140°02'50"E AGD66, south to latitude 27°48'10"S AGD66, west to longitude 140°02'40"E AGD66, south to latitude 27°48'20"S AGD66, west to longitude 140°02'30"E AGD66, south to latitude 27°48'30"S AGD66, west to longitude 140°02'10"E AGD66, south to latitude 27°49'00"S AGD66, west to longitude 139°58'50"E AGD66, north to latitude 27°48'50"S AGD66, west to longitude 139°58'30"E AGD66, south to latitude 27°49'00"S AGD66, east to longitude 139°58'40"E AGD66, south to latitude 27°49'20"S AGD66, east to longitude 139°59'00"E AGD66, south to latitude 27°49'40"S GDA94, west to longitude 139°56'50"E AGD66, north to latitude 27°48'30"S AGD66, west to longitude 139°56'10"E AGD66, north to latitude 27°47'30"S AGD66, east to longitude 139°56'30"E AGD66, north to latitude 27°47'10"S AGD66, east to longitude 139°56'50"E AGD66, north to latitude 27°46'50"S AGD66, east to longitude 139°57'20"E AGD66 and north to the point of commencement.

and

Commencing at a point being the intersection of latitude 27°49'15"S GDA2020 and longitude 139°56'35"E GDA2020, thence west to longitude 139°55'25"E GDA2020, north to latitude 27°48'25"S GDA2020, east to longitude 139°56'35"E GDA2020 and south to the point of commencement.

and

Commencing at a point being the intersection of latitude 27°48'50"S AGD66 and longitude 139°54'20"E AGD66, thence west to longitude 139°53'50"E AGD66, north to latitude 27°48'40"S AGD66, west to longitude 139°53'30"E AGD66, north to latitude 27°48'30"S AGD66, west to longitude 139°53'20"E AGD66, north to latitude 27°48'25"S AGD66, west to longitude 139°53'10"E AGD66, north to latitude 27°48'00"S AGD66, east to longitude 139°53'20"E AGD66, north to latitude 27°47'50"S AGD66, east to longitude 139°53'30"E AGD66, north to latitude 27°47'40"S AGD66, east to longitude 139°54'00"E AGD66, south to latitude 27°47'45"S AGD66, east to longitude 139°54'05"E AGD66, south to latitude 27°47'50"S AGD66, east to longitude 139°54'10"E AGD66, south to latitude 27°48'00"S AGD66, east to longitude 139°54'15"E AGD66, south to latitude 27°48'05"S AGD66, east to longitude 139°54'20"E AGD66 and south to the point of commencement.

and

Commencing at a point being the intersection of latitude 27°56'20"S AGD66 and longitude 139°48'20"E AGD66, thence east to longitude 139°48'30"E AGD66, north to latitude 27°55'50"S AGD66, east to longitude 139°50'10"E AGD66, south to latitude 27°57'40"S AGD66, east to longitude 139°50'00"E AGD66, south to latitude 27°58'00"S AGD66, west to longitude 139°49'00"E AGD66, north to latitude 27°57'40"S AGD66, west to longitude 139°48'40"E AGD66, north to latitude 27°57'30"S AGD66, west to longitude 139°48'30"E AGD66, north to latitude 27°57'10"S AGD66, west to longitude 139°48'20"E AGD66 and north to the point of commencement.

and

Commencing at a point being the intersection of latitude 28°00'20"S AGD66 and longitude 139°46'10"E AGD66, thence east to longitude 139°46'20"E AGD66, south to latitude 28°00'40"S AGD66, east to longitude 139°46'30"E AGD66, south to latitude 28°00'50"S AGD66, east to longitude 139°46'40"E AGD66, south to latitude 28°01'00"S AGD66, east to longitude 139°47'00"E AGD66, south to latitude 28°01'10"S AGD66, east to longitude 139°47'20"E AGD66, south to latitude 28°01'20"S AGD66, east to longitude 139°48'10"E AGD66, north to latitude 28°01'10"S AGD66, east to longitude 139°48'20"E AGD66, north to latitude 28°00'40"S AGD66, west to longitude 139°48'10"E AGD66, north to latitude 28°00'30"S AGD66, west to longitude 139°47'50"E AGD66, north to latitude 28°00'20"S AGD66, west to longitude 139°47'40"E AGD66, north to latitude 28°00'00"S AGD66, west to longitude 139°47'30"E AGD66, north to latitude 27°59'50"S AGD66, west to longitude 139°46'40"E AGD66, north to latitude 27°59'40"S AGD66, west to longitude 139°46'10"E AGD66 and south to the point of commencement.

AREA 2

Commencing at a point being the intersection of latitude 27°52'00"S AGD66 and longitude 140°06'00"E AGD66, thence west to longitude 140°05'50"E AGD66, south to latitude 27°52'40"S AGD66, west to longitude 140°05'45"E GDA94, south to latitude 27°53'00"S GDA94, west to longitude 140°05'40"E GDA94, south to latitude 27°54'00"S Clarke1858, west to longitude 140°05'00"E Clarke1858, south to latitude 27°55'00"S Clarke1858, east to longitude 140°06'00"E AGD66 and north to the point of commencement.

AREA 3

Commencing at a point being the intersection of latitude 27°56'00"S GDA94 and longitude 140°21'30"E GDA94, thence east to longitude 140°23'00"E GDA94, north to latitude 27°53'00"S GDA94, west to longitude 140°21'30"E GDA94, north to latitude 27°51'00"S GDA94, west to longitude 140°16'40"E AGD66, south to latitude 27°57'00"S AGD66, east to longitude 140°21'30"E GDA94 and north to the point of commencement.

AREA 4

Commencing at a point being the intersection of latitude 27°49'00"S Clarke1858 and longitude 140°06'00"E AGD66, thence east to longitude 140°06'40"E AGD66, south to latitude 27°50'40"S AGD66, west to longitude 140°06'10"E AGD66, north to latitude 27°50'30"S AGD66, west to longitude 140°05'50"E AGD66, north to latitude 27°50'20"S AGD66, west to longitude 140°05'40"E AGD66, north to latitude 27°50'00"S AGD66, west to longitude 140°04'40"E AGD66, north to latitude 27°49'20"S AGD66, east to longitude 140°06'00"E AGD66 and north to the point of commencement.

AREA 5

Commencing at a point being the intersection of latitude 27°45'00"S Clarke1858 and longitude 140°05'50"E AGD66, thence east to longitude 140°07'00"E Clarke1858, south to latitude 27°45'30"S AGD66, west to longitude 140°06'10"E AGD66, south to latitude 27°45'40"S AGD66, west to longitude 140°05'50"E AGD66 and north to the point of commencement.

## AREA 6

Commencing at a point being the intersection of latitude 27°45'00"S Clarke1858 and longitude 140°07'00"E Clarke1858, thence east to longitude 140°08'00"E Clarke1858, north to latitude 27°44'00"S Clarke1858, east to longitude 140°09'00"E Clarke1858, north to latitude 27°43'00"S Clarke1858, west to longitude 140°07'00"E Clarke1858 and south to the point of commencement.

AREA: **683** square kilometres approximately.

Dated: 2 February 2024

BENJAMIN ZAMMIT  
Executive Director  
Regulation and Compliance Division  
Department for Energy and Mining  
Delegate of the Minister for Energy and Mining

## RADIATION PROTECTION AND CONTROL ACT 2021

## SECTION 76

## Notice RPC202402-01

PURSUANT to section 76 of the *Radiation Protection and Control Act 2021* (the Act), I, Anna Bedford, Acting Manager, Mining and Radiation, Environment Protection Authority, Delegate of the Minister for Climate, Environment and Water, exempt the following class of persons, from the requirement to hold a licence under section 24 of the *Radiation Protection and Control Act 2021*:

1. Persons who operate a fixed radiation gauge containing an ionising radiation apparatus, under the directions of a person who holds a licence under section 24 of the Act to operate such apparatus, excluding persons who install, maintain or service gauges.

This exemption shall take effect commencing on the date of publication of this Notice in the *Government Gazette*.

Dated: 9 January 2024

A. BEDFORD  
Delegate of the Minister for Climate, Environment and Water

## RADIATION PROTECTION AND CONTROL ACT 2021

## SECTION 76

## Notice RPC202402-02

PURSUANT to section 76 of the *Radiation Protection and Control Act 2021* (the Act), I, Anna Bedford, Acting Manager, Mining and Radiation, Environment Protection Authority, Delegate of the Minister for Climate, Environment and Water, exempt persons involved in emergency response to an identified major incident, a major emergency, or a disaster (as defined in the *Emergency Management Act 2004*) from the following requirements of the *Radiation Protection and Control Act 2021*, subject to conditions as specified:

1. A person is exempted from the requirement to hold a license under section 24 of the Act provided that person is licensed to operate ionising radiation apparatus or holds any authority required by the jurisdiction of their place of residence to conduct such work; and
2. A person is exempted from the requirement to hold a license under section 23 of the Act provided that person is licensed to use or handle radioactive material required by the jurisdiction of their place of residence to conduct such work; and
3. A person being the owner of an ionising radiation apparatus is exempted from the requirement to register the apparatus under section 27 of the Act provided that the apparatus is registered or subject to a license or other permit or authority required in the jurisdiction in which it is normally used.
4. A carrier is exempt from the requirement to be authorised to transport radioactive materials under section 21 of the Act provided that carrier is authorised to transport radioactive materials or holds any authority required by the jurisdiction of their place of residence to conduct such work.

This exemption does not absolve a person from any requirement in the Code of Practice for the Security of Radioactive Sources to have or comply with the Source Security Plan or Source Transport Security Plan.

This exemption shall take effect commencing on the date of publication of this Notice in the *Government Gazette*.

Dated: 9 January 2024

A. BEDFORD  
Delegate of the Minister for Climate, Environment and Water

## RADIATION PROTECTION AND CONTROL ACT 2021

## SECTION 76

## Notice RPC202402-04

PURSUANT to section 76 of the *Radiation Protection and Control Act 2021* (the Act), I, David Kruss, Principal Radiation Specialist, Mining and Radiation, Environment Protection Authority, being a person to whom the powers of the Minister under that section have been delegated under the Act, exempt persons from the requirement to hold a registration for a sealed radioactive source as per section 26 of the *Radiation Protection and Control Act 2021*, in respect of sealed radioactive sources subject to the following conditions:

1. This exemption only applies to sealed radioactive sources that are kept, stored, and used while contained in an instrument or device that contains another sealed radioactive source that is registered under section 26 of the Act and
2. That the subsequent source is named on the registration.

This exemption shall take effect commencing on the date of publication of this Notice in the *Government Gazette*.

Dated: 5 February 2024

D. KRUSS  
Delegate of the Minister for Climate, Environment and Water

**Petroleum and Geothermal Energy Act 2000**  
**S.115**

**MEMORANDUM**

**GAS STORAGE RETENTION LICENCE**  
**GSRL 252**

1. This licence granted with effect from 2 February 2024 is hereby entered on the public register.

2. Interests in the licence are:

Santos Limited	40.7%
Delhi Petroleum Pty Ltd	20.21%
Beach Energy (Operations) Limited	13.19%
Vamgas Pty Ltd	8.51%
Santos (NARNL Cooper) Pty Ltd	4.75%
Bridge Oil Developments Pty Ltd	3.99%
Alliance Petroleum Australia Pty Ltd	3.97%
Basin Oil Pty Ltd	2.10%
Reef Oil Pty Ltd	1.97%
Santos Petroleum Pty Ltd	0.40%
Santos (BOL) Pty Ltd	0.21%



**BENJAMIN ZAMMIT**  
**Executive Director**  
**Regulation and Compliance Division**  
**Department for Energy and Mining**  
**Delegate of the Minister for Energy and Mining**

Date: 2 February 2024

Ref: MER-2023/0197

# ***Petroleum and Geothermal Energy Act 2000***

## **GAS STORAGE RETENTION LICENCE**

### **GSRL 252**

I, BENJAMIN ZAMMIT, Executive Director, Regulation and Compliance Division, Department for Energy and Mining, in the State of South Australia, pursuant to the provisions of the *Petroleum and Geothermal Energy Act 2000* and all other enabling powers, for and on behalf of the Minister for Energy and Mining (Minister), pursuant to delegated powers dated 27 November 2023, HEREBY GRANT to:

<b>Santos Limited</b>	ACN 007 550 923
<b>Delhi Petroleum Pty Ltd</b>	ACN 007 854 686
<b>Beach Energy (Operations) Limited</b>	ACN 007 845 338
<b>Vamgas Pty Ltd</b>	ACN 006 245 110
<b>Santos (NARNL Cooper) Pty Ltd</b>	ACN 004 761 255
<b>Bridge Oil Developments Pty Ltd</b>	ACN 001 152 049
<b>Alliance Petroleum Australia</b>	ACN 004 559 951
<b>Basin Oil Pty Ltd</b>	ACN 000 628 017
<b>Reef Oil Pty Ltd</b>	ACN 000 646 800
<b>Santos (BOL) Pty Ltd</b>	ACN 000 670 575
<b>Santos Petroleum Pty Ltd</b>	ACN 000 146 369

(hereinafter referred to as the Licensees) a Retention Licence in relation to a natural reservoir for the storage of petroleum or another regulated substance in respect of the area set out below, to have effect for a period of five years and to expire on 1 February 2029 and carrying the right to two further renewal terms, subject to the provisions of the *Petroleum and Geothermal Energy Act 2000*.

### **DESCRIPTION OF AREA**

The land comprised in this licence is that part of the State of South Australia described in the Schedule hereto.

### **CONDITIONS**

1. During the term of the licence, the Licensees are authorised to carry out in the licence area -
  - (a) operations to establish the nature and extent of a discovery of a natural reservoir;
  - (b) operations to test the natural reservoir for the storage of petroleum or another regulated substance; and
  - (c) operations to establish the commercial feasibility of gas storage and appropriate gas storage techniques.
2. All regulated activities authorised by the Licence are classified as requiring high level official surveillance, unless the Licensees satisfy the Minister, that in view of the Licensees demonstrated competence to comply with the requirements of the Act and the conditions of this Licence, the activities should be classified as requiring low level official surveillance.
  - 2.1 The Minister's prior written approval is required for activities requiring high level official surveillance in accordance with Regulation 19 of the Regulations to the Act.

3. The Licensees shall during periods determined by the Minister, lodge and maintain with the Minister, in the form acceptable to the Minister, for the satisfaction of obligations arising under the Act or this licence, a security as specified by the Minister from time to time ("the Security").
  - 3.1 The Security shall be lodged in the form of either;
    - (a) cash; or
    - (b) an unconditional, irrevocable bank guarantee, insurance bond or letter of credit in a form, and from a financial institution, approved by the Minister.
  - 3.2 Interest will not be payable by the Minister to the Licensee on any cash Security.
  - 3.3 All charges incurred by the Licensees in obtaining and maintaining the Security, shall be met by the Licensees.
  - 3.4 If upon expiry, this Licence is not renewed and the Minister is satisfied that there are no further obligations under this Licence or the Act, the Minister will return the Security to the Licensees.
4. The Licensees must:
  - (a) maintain in force during the term of this licence public liability insurance to cover regulated activities under this licence (including sudden and accidental pollution) in the name of the Licensees for a sum not less than twenty million dollars (\$20,000,000.00) or such greater sum as specified by the Minister, and make such amendments to the terms and conditions of the insurance as the Minister may from time to time require;
  - (b) maintain in force during the drilling of any well or operation in any well, control of well insurance in the name of the Licensees for a sum not less than ten million dollars (\$10,000,000.00) or such greater sum as specified by the Minister, and make such amendments to the terms and conditions of the insurance as the Minister may from time to time require; and
  - (c) upon request by the Minister, provide the Minister with a cover note or certificate of currency of each insurance policy referred to in paragraphs (a) and (b).
5. The Minister in specifying the levels of insurance accepts no liability for the completeness of their listing, the adequacy of the sum insured, the limit of liability, the scoped coverage, or the conditions or exclusions of these insurances in respect to how they may or may not respond to any loss, damage or liability.
6. The Licensees will ensure, when preparing an Environmental Impact Report under Part 12 of the *Petroleum and Geothermal Energy Act 2000*, that the report also includes an assessment of the potential economic consequences for other licensees under the *Petroleum and Geothermal Energy Act 2000* or *Mining Act 1971* and owners of land, arising out of proposed regulated activities to be carried out in the licence area.
7. A contract or agreement entered into by the licensees to transfer or accept liability for any well or facility constructed for the purpose of undertaking a regulated activity under the *Petroleum Act 1940* or *Petroleum and Geothermal Energy Act 2000* cannot transfer, limit or exclude liability under the *Petroleum and Geothermal Energy Act 2000* unless written consent of the Minister is obtained.

Date: 2 February 2024 .....



.....  
**BENJAMIN ZAMMIT**  
**Executive Director**  
**Regulation and Compliance Division**  
**Department for Energy and Mining**  
**Delegate of the Minister for Energy and Mining**



**EXECUTED BY THE LICENSEES:**

**EXECUTED BY THE LICENSEES:**

Signed for and on behalf of:

- Santos Limited** (ACN 007 550 923)
- Vamgas Pty Ltd** (ACN 006 245 110)
- Santos (NARNL Cooper) Pty Ltd** (ACN 004 761 255)
- Bridge Oil Developments Pty Ltd** (ACN 001 152 049)
- Alliance Petroleum Australia Pty Ltd** (ACN 004 559 951)
- Basin Oil Pty Ltd** (ACN 000 628 017)
- Reef Oil Pty Ltd** (ACN 000 646 800)
- Santos (BOL) Pty Ltd** (ACN 000 670 575)
- Santos Petroleum Pty Ltd** (ACN 000 146 369)

By its authorised representative:



.....  
Signature of representative

Amanda Devonish

.....  
Print name of representative



.....  
Signature of witness

Jessica Cotton

.....  
Print name of witness

**EXECUTED** by **Beach Energy (Operations) Limited** (ACN 007 845 338)  
in accordance with Section 127 of the  
*Corporations Act 2001*:



.....  
Signature of Director

Bruce Clement

.....  
Print name of Director



.....  
Signature of ~~Director~~/Secretary\*

David Lim

.....  
Print name of ~~Director~~/Secretary\*  
(\*delete the inapplicable)

**EXECUTED** by **Delhi Petroleum Pty Ltd** (ACN 007 854 686)  
in accordance with Section 127 of the  
*Corporations Act 2001*:



.....  
Signature of Director

Bruce Clement

.....  
Print name of Director



.....  
Signature of ~~Director~~/Secretary\*

David Lim

.....  
Print name of ~~Director~~/Secretary\*  
(\*delete the inapplicable)

# THE SCHEDULE

## GAS STORAGE EXPLORATION LICENCE

### GSRL 252

#### DESCRIPTION OF AREA

All that part of the State of South Australia, bounded as follows:-

##### AREA 1

Commencing at a point being the intersection of latitude 27°41'00"S GDA94 and longitude 139°54'00"E GDA94, thence east to longitude 140°00'00"E GDA94, south to latitude 27°42'00"S GDA94, east to longitude 140°01'05"E GDA94, south to latitude 27°43'15"S AGD66, west to longitude 140°01'00"E AGD66, south to latitude 27°44'40"S AGD66, east to longitude 140°01'10"E AGD66, south to latitude 27°45'00"S Clarke1858, east to longitude 140°01'20"E AGD66, south to latitude 27°45'20"S AGD66, east to longitude 140°01'40"E AGD66, south to latitude 27°45'40"S AGD66, east to longitude 140°01'50"E AGD66, south to latitude 27°45'50"S AGD66, east to longitude 140°02'00"E AGD66, south to latitude 27°46'00"S AGD66, east to longitude 140°02'52"E AGD66, north to latitude 27°45'00"S Clarke1858, east to longitude 140°04'05"E AGD66, south to latitude 27°45'25"S AGD66, east to longitude 140°04'40"E AGD66, south to latitude 27°45'40"S AGD66, west to longitude 140°04'30"E AGD66, south to latitude 27°46'10"S AGD66, west to longitude 140°04'20"E AGD66, south to latitude 27°47'20"S AGD66, west to longitude 140°03'40"E AGD66, south to latitude 27°47'50"S AGD66, west to longitude 140°03'30"E AGD66, south to latitude 27°50'20"S AGD66, west to longitude 140°03'20"E AGD66, south to latitude 27°51'10"S AGD66, east to longitude 140°03'30"E AGD66, south to latitude 27°52'00"S AGD66, east to longitude 140°03'50"E AGD66, south to latitude 27°52'10"S AGD66, east to longitude 140°04'20"E AGD66, south to latitude 27°52'20"S AGD66, east to longitude 140°04'50"E AGD66, south to latitude 27°52'40"S AGD66, west to longitude 140°04'40"E AGD66, south to latitude 27°52'50"S AGD66, west to longitude 140°04'30"E AGD66, south to latitude 27°53'00"S AGD66, west to longitude 140°04'20"E AGD66, south to latitude 27°53'10"S AGD66, west to longitude 140°04'10"E AGD66, south to latitude 27°53'20"S AGD66, west to longitude 140°04'00"E AGD66, south to latitude 27°53'30"S AGD66, west to longitude 140°03'40"E AGD66, south to latitude 27°53'40"S AGD66, west to longitude 140°03'30"E AGD66, south to latitude 27°54'00"S Clarke1858, west to longitude 140°02'00"E Clarke1858, south to latitude 27°55'00"S Clarke1858, west to longitude 140°01'10"E AGD66, north to latitude 27°53'40"S AGD66, east to longitude 140°01'20"E AGD66, north to latitude 27°53'30"S AGD66, east to longitude 140°01'40"E AGD66, north to latitude 27°53'20"S AGD66, east to longitude 140°01'50"E AGD66, north to latitude 27°53'10"S AGD66, east to longitude 140°02'00"E AGD66, north to latitude 27°52'10"S AGD66, west to longitude 140°01'40"E AGD66, north to latitude 27°52'05"S AGD66, west to longitude 140°00'40"E AGD66, north to latitude 27°51'40"S AGD66, west to longitude 140°00'00"E AGD66, north to latitude 27°51'20"S AGD66, west to longitude 139°59'20"E AGD66, north to latitude 27°50'20"S AGD66, west to longitude 139°54'30"E AGD66, north to latitude 27°49'30"S AGD66, west to longitude 139°53'10"E AGD66, south to latitude 27°50'00"S AGD66, west to longitude 139°53'00"E AGD66, south to latitude 27°50'50"S AGD66, west to longitude 139°52'30"E AGD66, south to latitude 27°51'50"S AGD66, west to longitude 139°52'10"E AGD66, south to latitude 27°52'20"S AGD66, west to longitude 139°51'20"E AGD66, south to latitude 27°57'00"S AGD66, east to longitude 139°58'00"E Clarke1858, south to latitude 27°59'00"S Clarke1858, west to longitude 139°57'00"E Clarke1858, south to latitude 28°00'00"S Clarke1858, west to longitude 139°56'00"E Clarke1858, south to latitude 28°02'00"S Clarke1858, west to longitude 139°55'00"E

Clarke1858, south to latitude 28°03'50"S AGD66, west to longitude 139°54'30"E AGD66, south to latitude 28°04'00"S AGD66, west to longitude 139°54'20"E AGD66, south to latitude 28°04'20"S AGD66, west to longitude 139°54'10"E AGD66, south to latitude 28°05'00"S AGD66, west to longitude 139°45'40"E AGD66, north to latitude 28°02'30"S AGD66, west to longitude 139°45'20"E AGD66, north to latitude 28°02'10"S AGD66, west to longitude 139°45'00"E AGD66, north to latitude 28°01'30"S AGD66, west to longitude 139°44'40"E AGD66, north to latitude 27°54'55"S GDA94, west to longitude 139°43'46"E GDA94, north to latitude 27°53'00"S GDA94, east to longitude 139°49'30"E GDA94, north to latitude 27°51'55"S GDA94, east to longitude 139°50'10"E GDA94, north to latitude 27°51'05"S GDA94, east to longitude 139°50'25"E GDA94, north to latitude 27°50'35"S GDA94, east to longitude 139°50'35"E GDA94, north to latitude 27°49'55"S GDA94, east to longitude 139°51'25"E GDA94, north to latitude 27°49'40"S GDA94, east to longitude 139°52'00"E GDA94, north to latitude 27°49'15"S GDA94, west to longitude 139°51'35"E GDA94, north to latitude 27°49'10"S GDA94, west to longitude 139°51'25"E GDA94, north to latitude 27°48'55"S GDA94, east to longitude 139°51'45"E GDA94, north to latitude 27°48'30"S GDA94, west to longitude 139°51'25"E GDA94, north to latitude 27°47'45"S GDA94, west to longitude 139°51'20"E GDA94, north to latitude 27°47'35"S GDA94, west to longitude 139°51'15"E GDA94, north to latitude 27°47'30"S GDA94, west to longitude 139°51'10"E GDA94, north to latitude 27°47'20"S GDA94, west to longitude 139°50'45"E GDA94, north to latitude 27°46'50"S GDA94, west to longitude 139°50'25"E GDA94, north to latitude 27°46'30"S GDA94, west to longitude 139°50'15"E GDA94, north to latitude 27°46'00"S GDA94, east to longitude 139°52'00"E GDA94, south to latitude 27°46'55"S GDA94, east to longitude 139°54'55"E GDA94, north to latitude 27°46'35"S GDA94, east to longitude 139°55'00"E GDA94, north to latitude 27°46'25"S GDA94, east to longitude 139°55'05"E GDA94, north to latitude 27°46'15"S GDA94, east to longitude 139°55'30"E AGD66, south to latitude 27°46'30"S AGD66, east to longitude 139°56'30"E AGD66, north to latitude 27°46'00"S AGD66, east to longitude 139°57'10"E AGD66, north to latitude 27°45'50"S AGD66, east to longitude 139°57'40"E AGD66, north to latitude 27°45'30"S AGD66, east to longitude 139°58'00"E AGD66, south to latitude 27°45'40"S AGD66, east to longitude 139°58'20"E AGD66, north to latitude 27°45'30"S AGD66, east to longitude 139°58'30"E AGD66, north to latitude 27°45'20"S AGD66, east to longitude 139°58'40"E AGD66, north to latitude 27°45'00"S Clarke1858, east to longitude 139°59'40"E AGD66, north to latitude 27°43'50"S AGD66, west to longitude 139°59'20"E AGD66, north to latitude 27°43'30"S AGD66, west to longitude 139°58'30"E AGD66, north to latitude 27°43'20"S AGD66, west to longitude 139°56'50"E AGD66, south to latitude 27°43'30"S AGD66, west to longitude 139°56'10"E AGD66, south to latitude 27°44'30"S AGD66, west to longitude 139°55'50"E AGD66, north to latitude 27°44'20"S AGD66, west to longitude 139°55'20"E AGD66, south to latitude 27°44'30"S AGD66, west to longitude 139°55'00"E GDA94, north to latitude 27°42'00"S GDA94, west to longitude 139°54'00"E GDA94 and north to the point of commencement, but excluding the areas bounded as follows -

Commencing at a point being the intersection of latitude 27°46'10"S AGD66 and longitude 139°57'20"E AGD66, thence east to longitude 139°58'20"E AGD66, south to latitude 27°47'00"S AGD66, east to longitude 139°59'00"E AGD66, south to latitude 27°47'10"S AGD66, east to longitude 139°59'20"E AGD66, south to latitude 27°47'20"S AGD66, east to longitude 139°59'40"E AGD66, south to latitude 27°47'30"S AGD66, east to longitude 140°02'00"E AGD66, north to latitude 27°47'10"S AGD66, east to longitude 140°03'10"E AGD66, south to latitude 27°47'30"S AGD66, east to longitude 140°03'20"E AGD66, south to latitude 27°47'50"S AGD66, west to longitude 140°03'10"E AGD66, south to latitude 27°48'00"S AGD66, west to longitude 140°02'50"E AGD66, south to latitude 27°48'10"S AGD66, west to longitude 140°02'40"E AGD66, south to latitude 27°48'20"S AGD66, west to longitude 140°02'30"E AGD66, south to latitude 27°48'30"S AGD66, west to longitude 140°02'10"E AGD66, south to latitude 27°49'00"S AGD66, west to longitude 139°58'50"E AGD66, north to latitude 27°48'50"S AGD66, west to longitude 139°58'30"E AGD66, south to latitude 27°49'00"S AGD66, east to longitude 139°58'40"E AGD66, south to latitude 27°49'20"S AGD66, east to longitude 139°59'00"E AGD66, south to latitude 27°49'40"S GDA94, west to longitude 139°56'50"E AGD66, north to latitude 27°48'30"S AGD66, west to

longitude 139°56'10"E AGD66, north to latitude 27°47'30"S AGD66, east to longitude 139°56'30"E AGD66, north to latitude 27°47'10"S AGD66, east to longitude 139°56'50"E AGD66, north to latitude 27°46'50"S AGD66, east to longitude 139°57'20"E AGD66 and north to the point of commencement.

and

Commencing at a point being the intersection of latitude 27°49'15"S GDA2020 and longitude 139°56'35"E GDA2020, thence west to longitude 139°55'25"E GDA2020, north to latitude 27°48'25"S GDA2020, east to longitude 139°56'35"E GDA2020 and south to the point of commencement.

and

Commencing at a point being the intersection of latitude 27°48'50"S AGD66 and longitude 139°54'20"E AGD66, thence west to longitude 139°53'50"E AGD66, north to latitude 27°48'40"S AGD66, west to longitude 139°53'30"E AGD66, north to latitude 27°48'30"S AGD66, west to longitude 139°53'20"E AGD66, north to latitude 27°48'25"S AGD66, west to longitude 139°53'10"E AGD66, north to latitude 27°48'00"S AGD66, east to longitude 139°53'20"E AGD66, north to latitude 27°47'50"S AGD66, east to longitude 139°53'30"E AGD66, north to latitude 27°47'40"S AGD66, east to longitude 139°54'00"E AGD66, south to latitude 27°47'45"S AGD66, east to longitude 139°54'05"E AGD66, south to latitude 27°47'50"S AGD66, east to longitude 139°54'10"E AGD66, south to latitude 27°48'00"S AGD66, east to longitude 139°54'15"E AGD66, south to latitude 27°48'05"S AGD66, east to longitude 139°54'20"E AGD66 and south to the point of commencement.

and

Commencing at a point being the intersection of latitude 27°56'20"S AGD66 and longitude 139°48'20"E AGD66, thence east to longitude 139°48'30"E AGD66, north to latitude 27°55'50"S AGD66, east to longitude 139°50'10"E AGD66, south to latitude 27°57'40"S AGD66, west to longitude 139°50'00"E AGD66, south to latitude 27°58'00"S AGD66, west to longitude 139°49'00"E AGD66, north to latitude 27°57'40"S AGD66, west to longitude 139°48'40"E AGD66, north to latitude 27°57'30"S AGD66, west to longitude 139°48'30"E AGD66, north to latitude 27°57'10"S AGD66, west to longitude 139°48'20"E AGD66 and north to the point of commencement.

and

Commencing at a point being the intersection of latitude 28°00'20"S AGD66 and longitude 139°46'10"E AGD66, thence east to longitude 139°46'20"E AGD66, south to latitude 28°00'40"S AGD66, east to longitude 139°46'30"E AGD66, south to latitude 28°00'50"S AGD66, east to longitude 139°46'40"E AGD66, south to latitude 28°01'00"S AGD66, east to longitude 139°47'00"E AGD66, south to latitude 28°01'10"S AGD66, east to longitude 139°47'20"E AGD66, south to latitude 28°01'20"S AGD66, east to longitude 139°48'10"E AGD66, north to latitude 28°01'10"S AGD66, east to longitude 139°48'20"E AGD66, north to latitude 28°00'40"S AGD66, west to longitude 139°48'10"E AGD66, north to latitude 28°00'30"S AGD66, west to longitude 139°47'50"E AGD66, north to latitude 28°00'20"S AGD66, west to longitude 139°47'40"E AGD66, north to latitude 28°00'00"S AGD66, west to longitude 139°47'30"E AGD66, north to latitude 27°59'50"S AGD66, west to longitude 139°46'40"E AGD66, north to latitude 27°59'40"S AGD66, west to longitude 139°46'10"E AGD66 and south to the point of commencement.

## AREA 2

Commencing at a point being the intersection of latitude 27°52'00"S AGD66 and longitude 140°06'00"E AGD66, thence west to longitude 140°05'50"E AGD66, south to latitude

27°52'40"S AGD66, west to longitude 140°05'45"E GDA94, south to latitude 27°53'00"S GDA94, west to longitude 140°05'40"E GDA94, south to latitude 27°54'00"S Clarke1858, west to longitude 140°05'00"E Clarke1858, south to latitude 27°55'00"S Clarke1858, east to longitude 140°06'00"E AGD66 and north to the point of commencement.

#### AREA 3

Commencing at a point being the intersection of latitude 27°56'00"S GDA94 and longitude 140°21'30"E GDA94, thence east to longitude 140°23'00"E GDA94, north to latitude 27°53'00"S GDA94, west to longitude 140°21'30"E GDA94, north to latitude 27°51'00"S GDA94, west to longitude 140°16'40"E AGD66, south to latitude 27°57'00"S AGD66, east to longitude 140°21'30"E GDA94 and north to the point of commencement.

#### AREA 4

Commencing at a point being the intersection of latitude 27°49'00"S Clarke1858 and longitude 140°06'00"E AGD66, thence east to longitude 140°06'40"E AGD66, south to latitude 27°50'40"S AGD66, west to longitude 140°06'10"E AGD66, north to latitude 27°50'30"S AGD66, west to longitude 140°05'50"E AGD66, north to latitude 27°50'20"S AGD66, west to longitude 140°05'40"E AGD66, north to latitude 27°50'00"S AGD66, west to longitude 140°04'40"E AGD66, north to latitude 27°49'20"S AGD66, east to longitude 140°06'00"E AGD66 and north to the point of commencement.

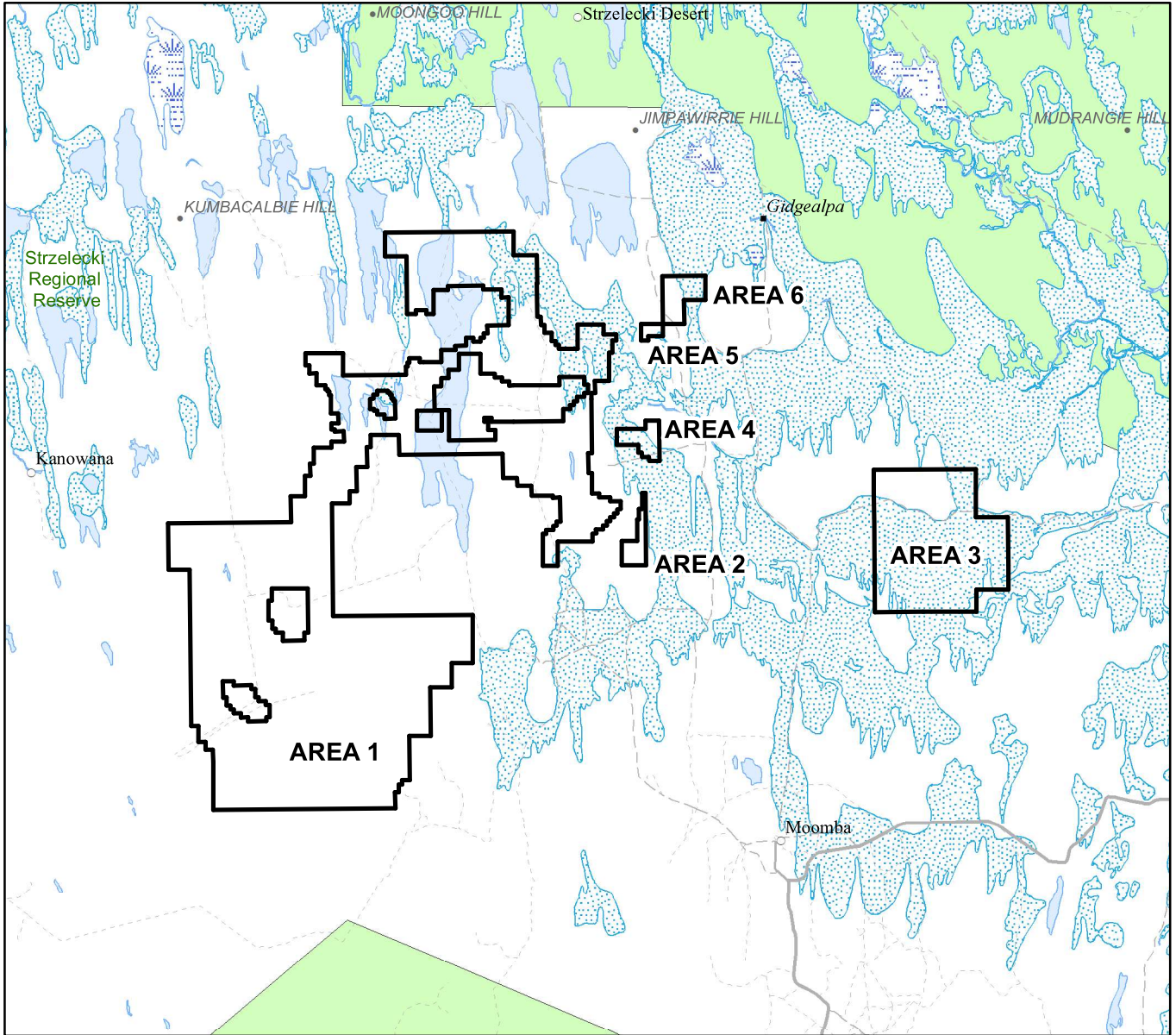
#### AREA 5

Commencing at a point being the intersection of latitude 27°45'00"S Clarke1858 and longitude 140°05'50"E AGD66, thence east to longitude 140°07'00"E Clarke1858, south to latitude 27°45'30"S AGD66, west to longitude 140°06'10"E AGD66, south to latitude 27°45'40"S AGD66, west to longitude 140°05'50"E AGD66 and north to the point of commencement.

#### AREA 6

Commencing at a point being the intersection of latitude 27°45'00"S Clarke1858 and longitude 140°07'00"E Clarke1858, thence east to longitude 140°08'00"E Clarke1858, north to latitude 27°44'00"S Clarke1858, east to longitude 140°09'00"E Clarke1858, north to latitude 27°43'00"S Clarke1858, west to longitude 140°07'00"E Clarke1858 and south to the point of commencement.

AREA: **683** square kilometres approximately.



SCALE 1: 500 000



Note: There is no warranty that the boundary of this licence is correct in relation to other features of the map.  
 The boundary is to be ascertained by reference to the Australian Geodetic Datum (AGD66),  
 Clarke 1858, Geocentric Datum of Australia (GDA94), Geocentric Datum of Australia (GDA2020) and the schedule.

THE PLAN HEREINBEFORE REFERRED TO

**GAS STORAGE RETENTION LICENCE NO: 252**



**MER-2023/0197**

**AREA: 683 sq km (approx)**