

# Safe operating procedures and checklist for LPG BBQ's used by schools, clubs and institutions

## Gas Bulletin #5F

Issued February 2023

- Only use barbecues that carry the Australian Gas Association (AGA), Standards Australia International Global (SAIG), International Association of Plumbing & Mechanical Officials (IAPMO), Global Mark Pty Ltd labels or those which have been safety assessed and certified by an individual appliance assessor recognised by the Office of the Technical Regulator. These appliances have been tested for safety and reliability. (See note below).
- Clear instructions for connecting the cylinder / lighting and operating the appliance / shutting down the appliance and disconnecting the cylinder are to be displayed on, or attached to, the barbecue.
- Portable barbecues are certified for outdoor use only and should only be used in an open well-ventilated area. Good cross flow ventilation must be provided.
- If operated in a tent / marquee or under a covered area, there must be ample ventilation (at least 50% of the area open) whenever the appliance is in use. The barbecue is to be positioned at least 600mm clear of any combustible materials.
- LP Gas cylinders should be located so that they do not block access / egress points. If not attached to the barbecue they should be secured in the upright position.
- Adult supervision must be provided at all time.
- The barbecue is to be properly maintained by a licensed gas fitter. Report any defects immediately. Keep an appliance logbook.
- Check all fittings and hoses are free of defects and in good condition. Flexible gas hose assemblies should be protected from mechanical and heat damage and not present a tripping hazard.
- Check the cylinder valves, regulator and connections for gas escapes using a soapy water solution in a spray bottle. (Ensure the gas bottle is turned on but the appliance taps are off when doing this).
- Check the cylinder for signs of damage and rust and ensure that it is not more than 10 years old. (A date stamp will be found on the top collar of the cylinder.)

- It is illegal to fill an LP gas cylinder if it is damaged or after the date has expired. Cylinder test stations will, for a fee, refurbish LPG cylinders and restamp them for a further 10 years. Alternatively LPG Agents may accept out of date cylinders and exchange them for full cylinders at their Swap-n-Go outlets.
- Only fill cylinders with the correct gas. Do not fill cylinders with Auto Gas as this is a different fuel and could produce a dangerous situation when used in an appliance.
- Ensure the cylinder is filled to the correct level (80% of the cylinders volume) to allow for liquid expansion due to temperature increases.
- Ensure cylinders are used and stored in an upright position.
- Store gas cylinders in an outside, secure, well vented area or compound
- If it is necessary to transport LPG cylinders inside an enclosed vehicle keep upright and cool. (Suggest cover in a wet sack or towel in hot weather). Keep the vehicle well ventilated during transport. If possible, transport in an open vehicle such as a utility or trailer.
- If a gas leak is suspected during operation, turn off the barbecue and the cylinder. Seek assistance.
- The provision of a fire blanket should be considered whenever the barbecue is used.

### **Note 1**

Liquefied Petroleum Gas - LPG - is stored under pressure as a liquid and used as a gas. It is essential that the cylinder is stored and used in the upright position so that the valve is in the vapor space. LPG is a powerful fuel containing more than twice the energy, volume for volume, as natural gas. The gas is heavier than air and will settle to the ground if not dispersed by wind.

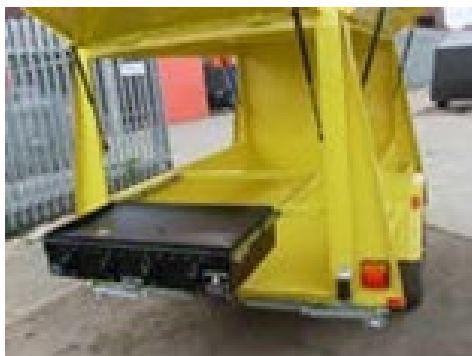
#### **Labels carried by a certified gas barbecue:**



**Please note: The images of AGA, SAIG, IAPMO and GLOBAL MARK labels are copyright and reproduction without permission will result in Legal Action by the organisations.**

## Trailer BBQ's

- If a BBQ is custom manufactured as an individual component or as part of the trailer then it will require individual safety compliance assessment by an OTR recognised appliance certifier. Contact the OTR on the below details for more information.
- Alternatively, a pre-certified BBQ, labelled by one of the organisations listed above, may be mounted securely in a trailer observing the manufacturers clearances. Provided that a licensed gas fitter installs the cylinder(s), regulator and pipework in compliance with AS/NZS 5601 Part 2 and issues a gas Certificate of Compliance the OTR will accept the installation as compliant.



Contact the Office of the Technical Regulator for more information

Online [otr.sa.gov.au](http://otr.sa.gov.au)  
Email [otr@sa.gov.au](mailto:otr@sa.gov.au)  
Phone 8226 5722



**Government of  
South Australia**