

# Multilayer piping - reversion fittings

## Gas Bulletin #61

Issued November 2023

### Clause 5.2.12 Reversion fittings for proprietary multilayer piping

Reversion fittings must be installed in Class 1 buildings where a multilayer piping system installation has a main run exceeding 10 metres in length and has more than one appliance connected.

Reversion to standard thread complying with AS ISO 7.1, BSPT, or a standard annealed copper tube, must be provided on the main run prior to the first and last branch take off points.

Reversion fittings are only required to be installed where they will be accessible, including ceiling cavities.

Due to compatibility issues, different brands of multilayered piping are not dimensionally compatible or approved to be connected directly to other brands (this includes the manufacturers proprietary fittings and tools).

The intent for reversion to standard thread, or annealed copper in a multilayer piping installation, is to allow for future extension or connection to a non-compatible multilayer piping brand or to standard piping materials.

### Acceptable reversions

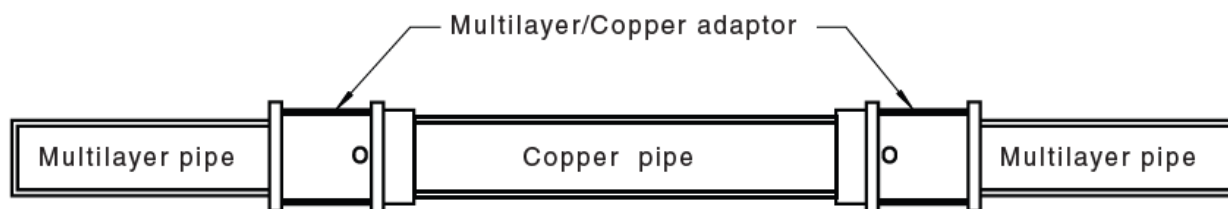
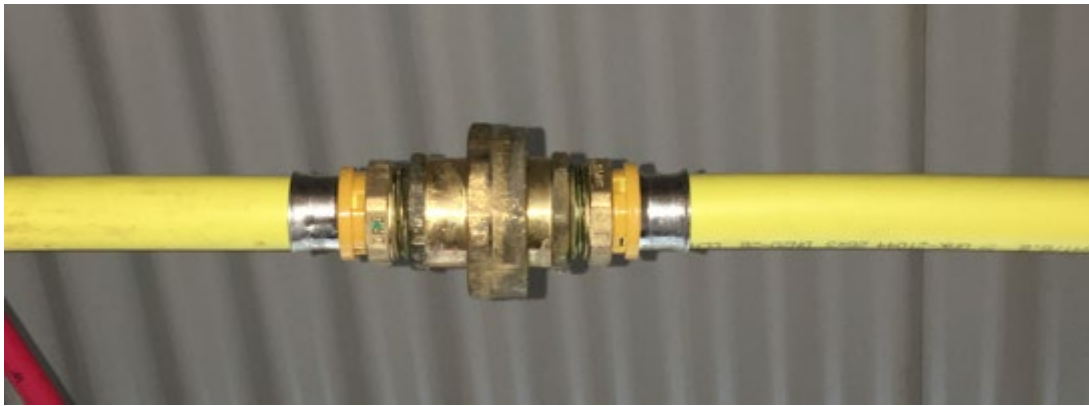


Figure 1: Reversion to standard annealed copper tube



*Figure 2: Reversion to standard BSP thread (F&F barrel union)*

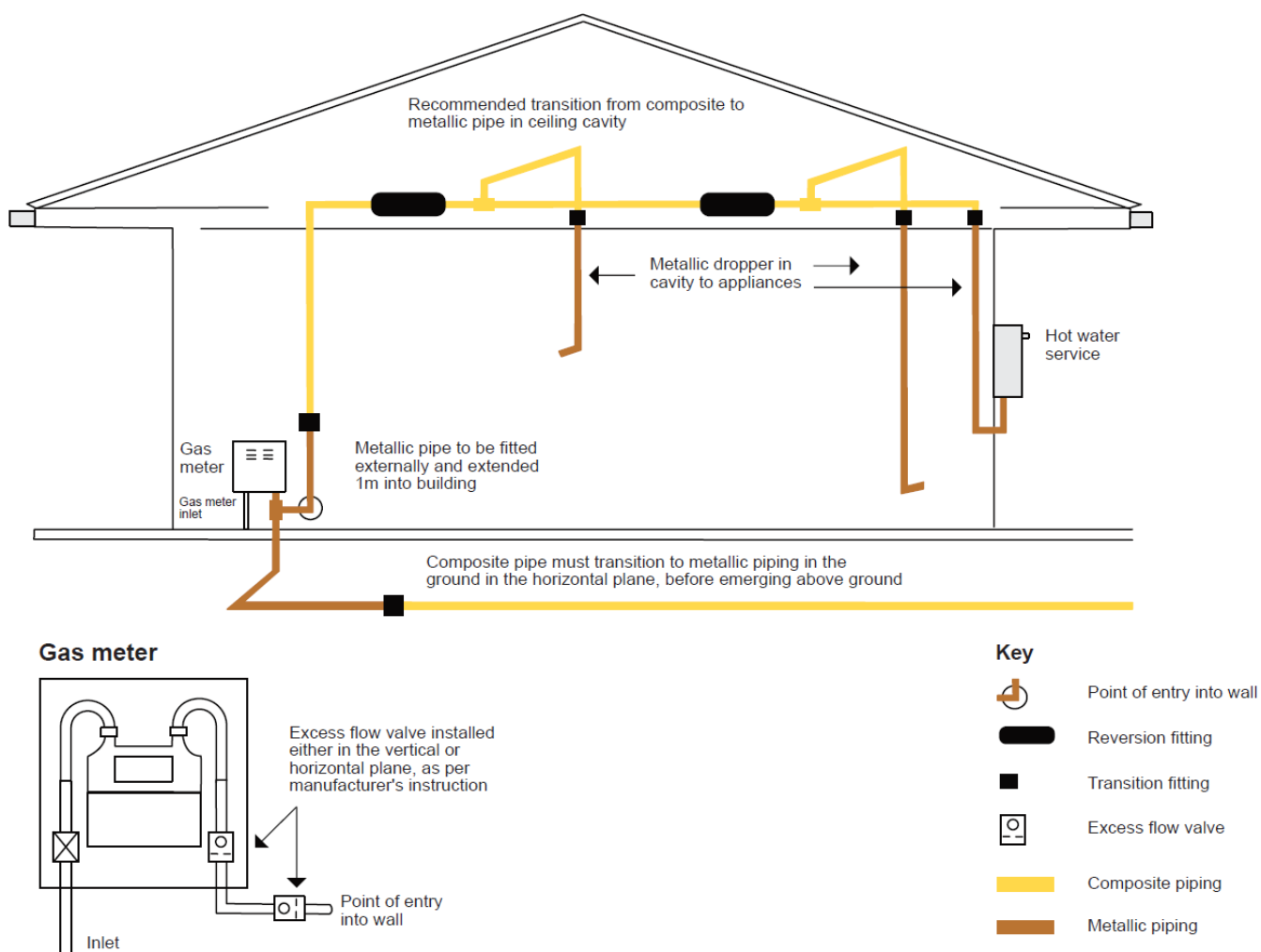


*Figure 3: Reversion to BSPT Malleable C.I Cross Fitting - acceptable in South Australia*



*Figure 4: Reversion to 2 joined BSPT MI tees - acceptable in South Australia*

---



**Note:** Marker tape must be laid above composite pipe when installed in an open trench, the tape must be between 150mm and 300mm between the finished ground surface.

*Figure 5: Example of reversion fittings installed in a multilayer piping system.*

To ensure composite pipe is installed at least 1 metre away from gas appliances, the OTR recommends running metallic droppers from the ceiling cavity down to the appliance connection point.

Contact the Office of the Technical Regulator for more information

Online [otr.sa.gov.au](http://otr.sa.gov.au)  
 Email [otr@sa.gov.au](mailto:otr@sa.gov.au)  
 Phone 8226 5722



**Government of  
South Australia**