

## Statewide Wind Farms DPA - Eyre Peninsula

- Wind farms explicitly envisaged and Category 2 if >2km from non-associated dwelling
- Area in which wind farms not explicitly envisaged and Category 3
- Wind farms discouraged due to proximity to comparatively dense population and Category 3

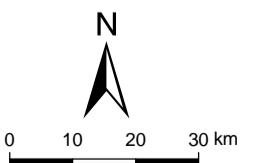
- Proposed Character Preservation Districts
- Zones, policy areas and precincts that have 2km wind farm buffer
- Existing and proposed wind farms
  - Built
  - Approved and progressing

- Local government boundary
- NPWSA reserves
- Major road
- Major towns
- Other towns and localities

Zones used in analysis for areas that facilitate wind farms based on zones at 10 October 2011. Zones in which wind farms are not explicitly envisaged are current at map production date.

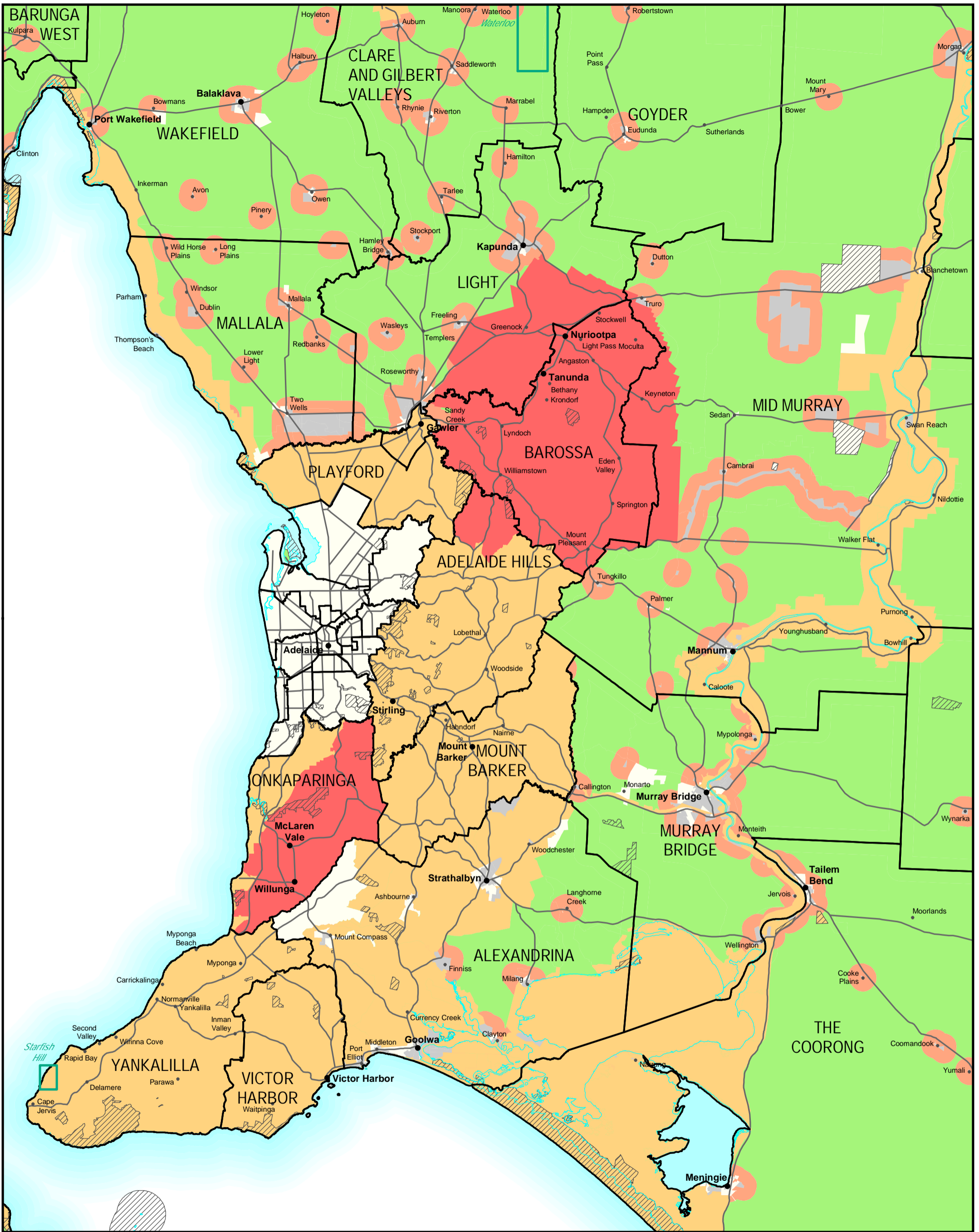
NPWSA reserves supplied by DEWNR.

Produced by DPTI - Planning Division  
© Government of South Australia September 2012



Government of South Australia  
Department of Planning,  
Transport and Infrastructure

PLN ID: 4057



## Statewide Wind Farms DPA - Greater Adelaide

- Wind farms explicitly envisaged and Category 2 if >2km from non-associated dwelling
- Area in which wind farms not explicitly envisaged and Category 3
- Wind farms discouraged due to proximity to comparatively dense population and Category 3

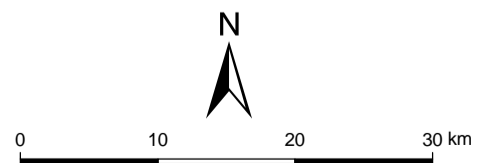
- Proposed Character Preservation Districts
- Zones, policy areas and precincts that have 2km wind farm buffer
- Existing and proposed wind farms
  - Built
  - Approved and progressing

- Local government boundary
- NPWSA reserves
- Major road
- Major towns
- Other towns and localities

Zones used in analysis for areas that facilitate wind farms based on zones at 10 October 2011. Zones in which wind farms are not explicitly envisaged are current at map production date.

NPWSA reserves supplied by DEWNR.

Produced by DPTI - Planning Division  
© Government of South Australia September 2012



Government of South Australia  
Department of Planning,  
Transport and Infrastructure

PLN ID: 4057



## Statewide Wind Farms DPA - Kangaroo Island

- Wind farms explicitly envisaged and Category 2 if >2km from non-associated dwelling
- Area in which wind farms not explicitly envisaged and Category 3
- Wind farms discouraged due to proximity to comparatively dense population and Category 3

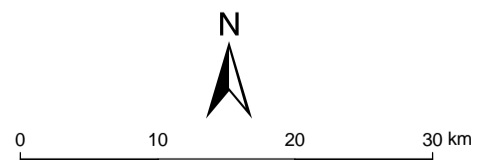
- Proposed Character Preservation Districts
- Zones, policy areas and precincts that have 2km wind farm buffer
- Existing and proposed wind farms
  - Built
  - Approved and progressing

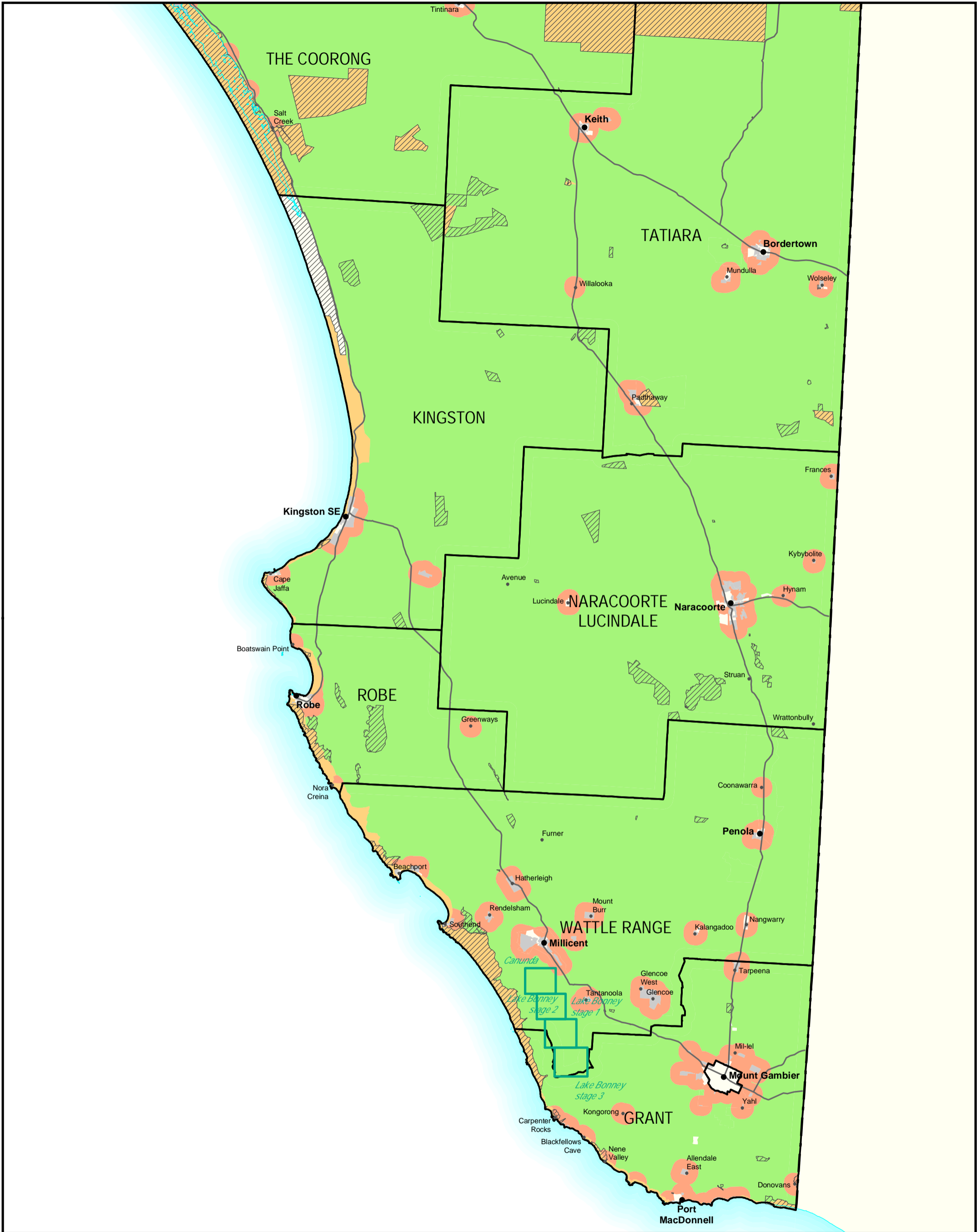
- Local government boundary
- NPWSA reserves
- Major road
- Major towns
- Other towns and localities

Zones used in analysis for areas that facilitate wind farms based on zones at 10 October 2011. Zones in which wind farms are not explicitly envisaged are current at map production date.

NPWSA reserves supplied by DEWNR.

Produced by DPTI - Planning Division  
© Government of South Australia September 2012





## Statewide Wind Farms DPA - Limestone Coast

- Wind farms explicitly envisaged and Category 2 if >2km from non-associated dwelling
- Area in which wind farms not explicitly envisaged and Category 3
- Wind farms discouraged due to proximity to comparatively dense population and Category 3

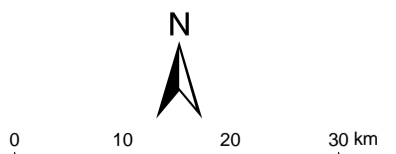
- Proposed Character Preservation Districts
- Zones, policy areas and precincts that have 2km wind farm buffer
- Existing and proposed wind farms
  - Built
  - Approved and progressing

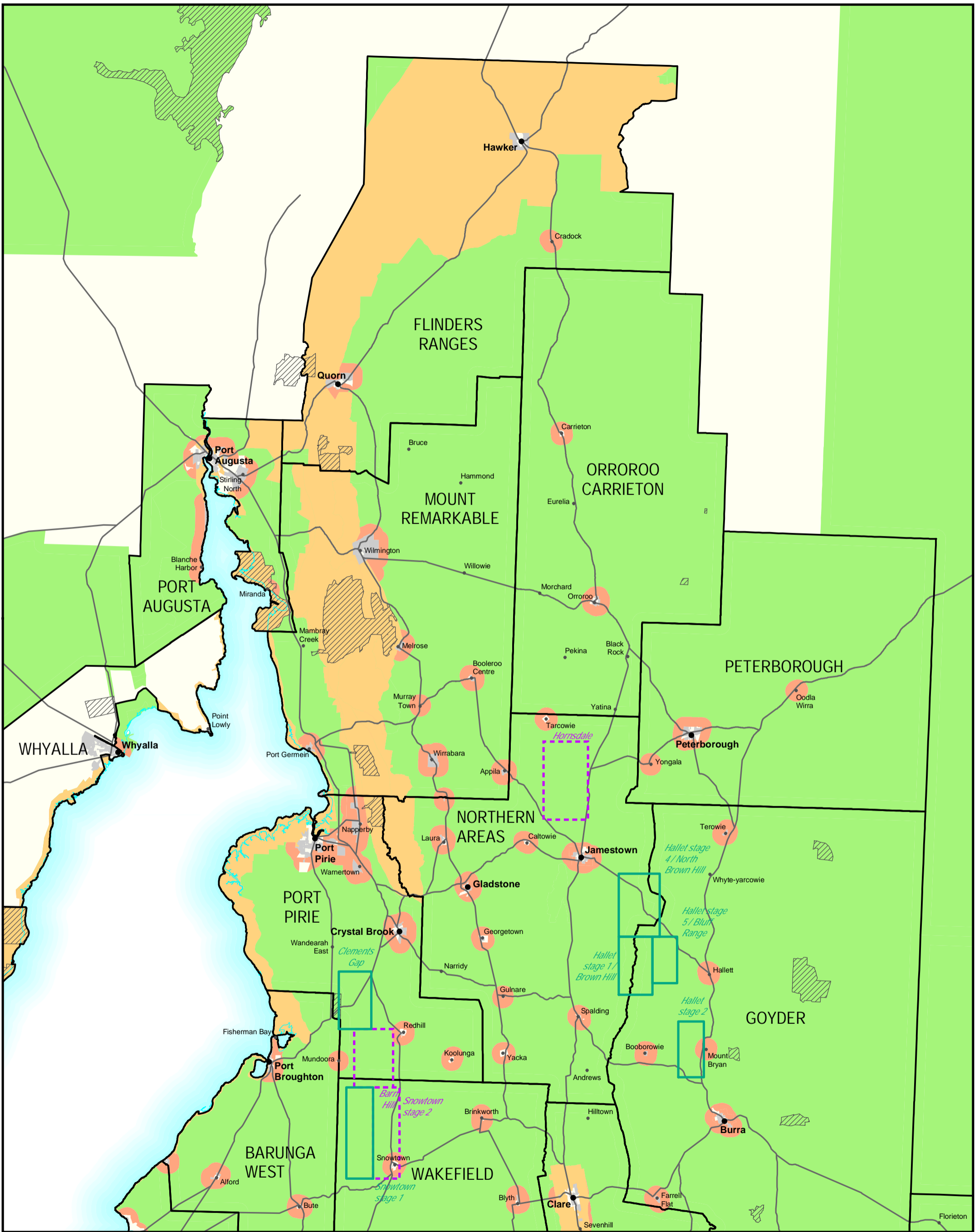
- Local government boundary
- NPWSA reserves
- Major road
- Major towns
- Other towns and localities

Zones used in analysis for areas that facilitate wind farms based on zones at 10 October 2011. Zones in which wind farms are not explicitly envisaged are current at map production date.

NPWSA reserves supplied by DEWNR.

Produced by DPTI - Planning Division  
© Government of South Australia September 2012





# Statewide Wind Farms DPA - Upper Mid North/Lower Flinders Ranges

■ Wind farms explicitly envisaged and Category 2 if >2km from non-associated dwelling  
■ Area in which wind farms not explicitly envisaged and Category 3  
■ Wind farms discouraged due to proximity to comparatively dense population and Category 3

■ Proposed Character Preservation Districts  
■ Zones, policy areas and precincts that have 2km wind farm buffer  
 Existing and proposed wind farms  
  Built  
  Approved and progressing

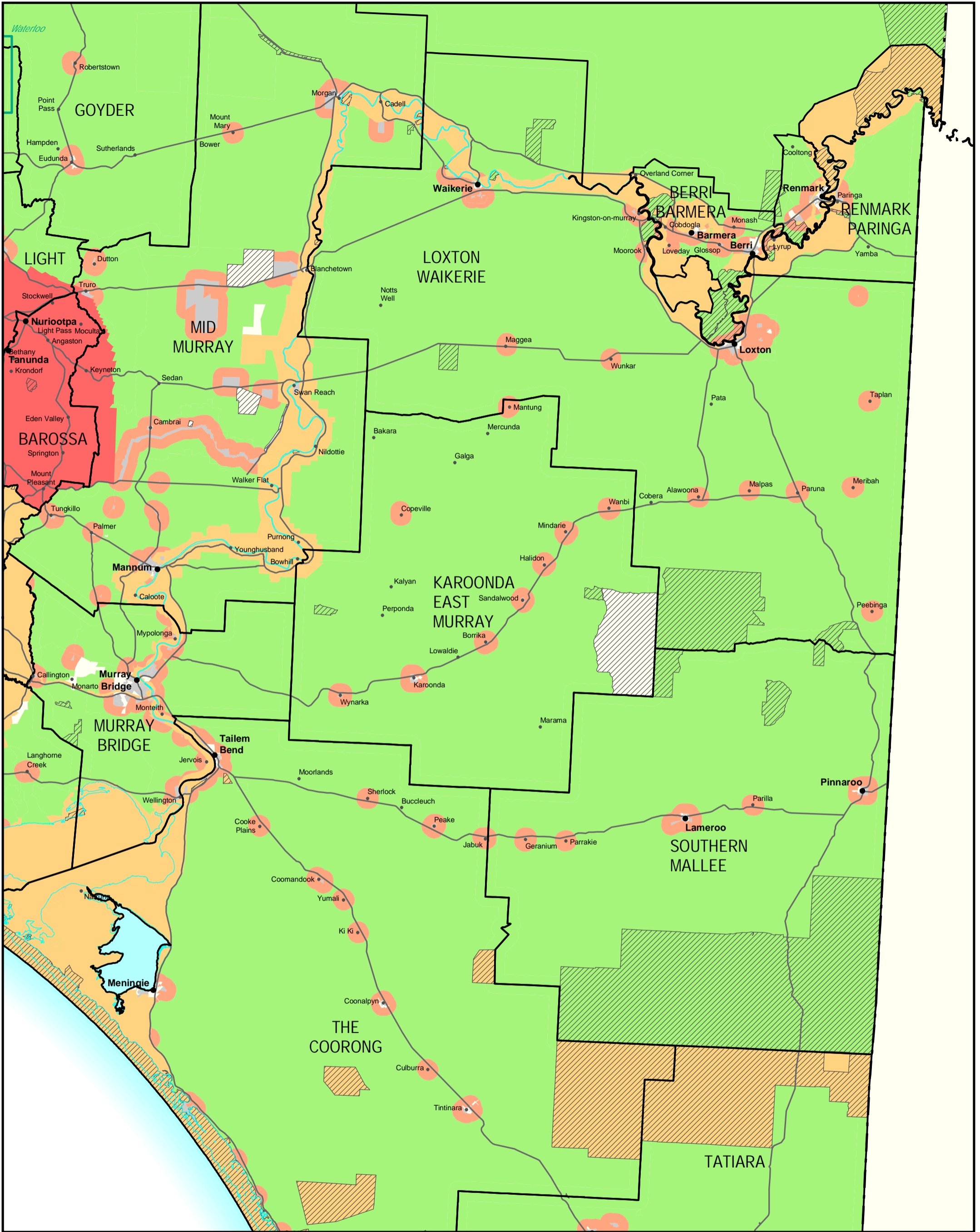
  Local government boundary  
  NPWSA reserves  
 Major road  
● Major towns  
● Other towns and localities

Zones used in analysis for areas that facilitate wind farms based on zones at 10 October 2011. Zones in which wind farms are not explicitly envisaged are current at map production date.

NPWSA reserves supplied by DEWNR.

Produced by DPTI - Planning Division  
 © Government of South Australia September 2012





## Statewide Wind Farms DPA - Murray and Mallee

■ Wind farms explicitly envisaged and Category 2 if >2km from non-associated dwelling  
■ Area in which wind farms not explicitly envisaged and Category 3  
■ Wind farms discouraged due to proximity to comparatively dense population and Category 3

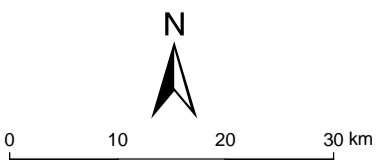
■ Proposed Character Preservation Districts  
■ Zones, policy areas and precincts that have 2km wind farm buffer  
 Existing and proposed wind farms  
 Built  
 Approved and progressing

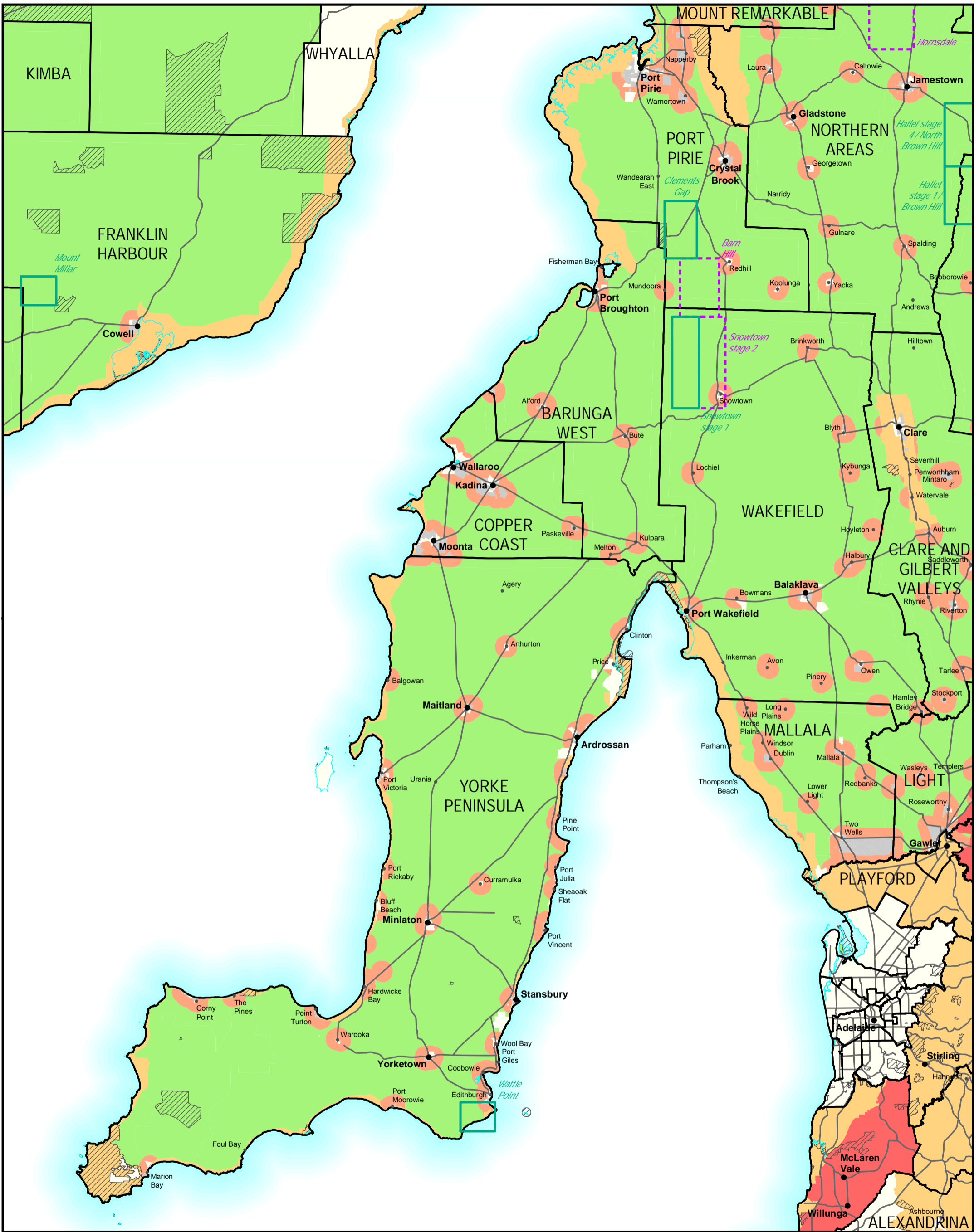
Local government boundary  
 NPWSA reserves  
 Major road  
● Major towns  
● Other towns and localities

Zones used in analysis for areas that facilitate wind farms based on zones at 10 October 2011. Zones in which wind farms are not explicitly envisaged are current at map production date.

NPWSA reserves supplied by DEWNR.

Produced by DPTI - Planning Division  
© Government of South Australia September 2012





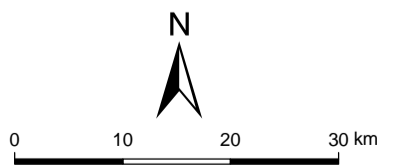
## Statewide Wind Farms DPA - Yorke Peninsula

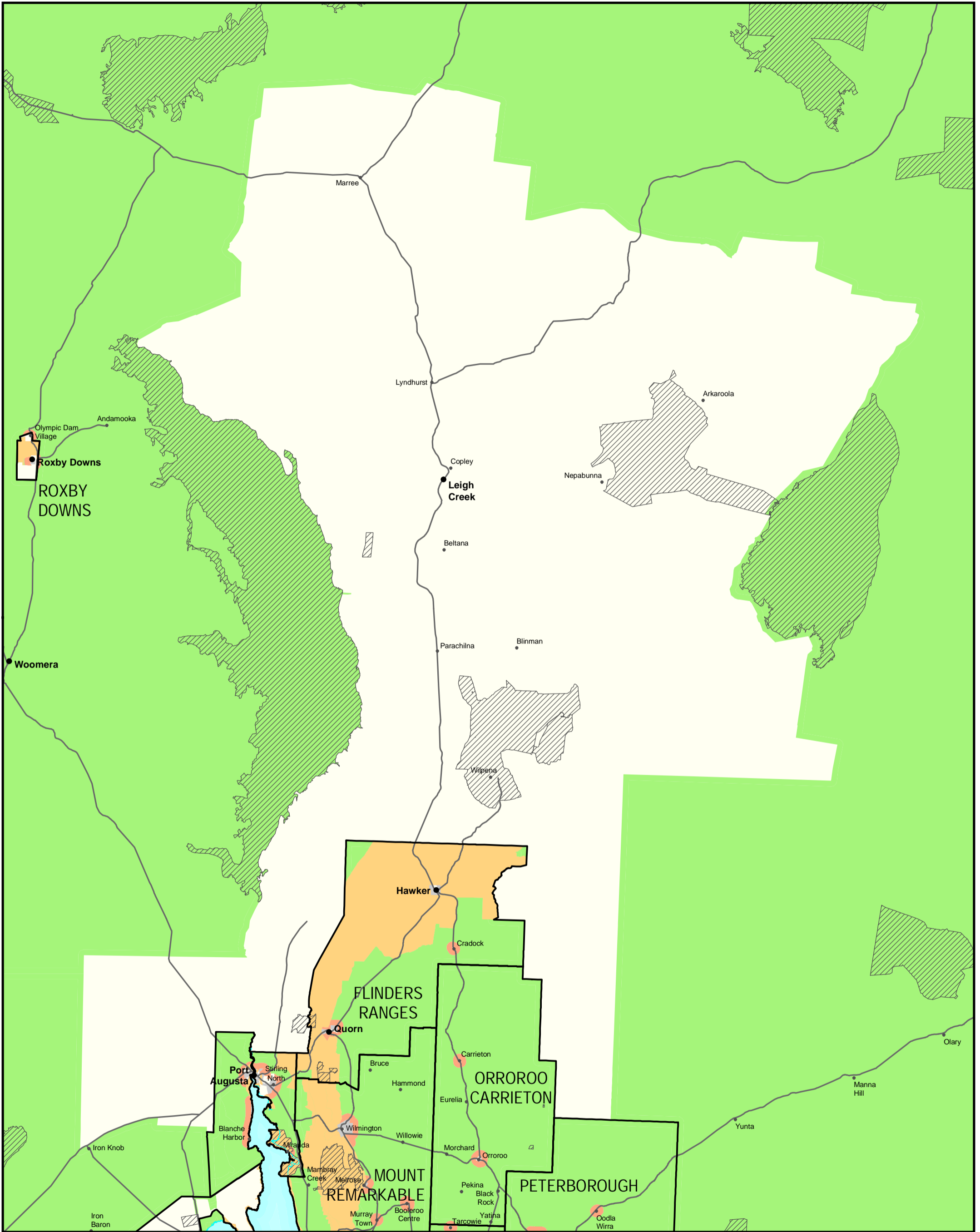
- Wind farms explicitly envisaged and Category 2 if >2km from non-associated dwelling
- Area in which wind farms not explicitly envisaged and Category 3
- Wind farms discouraged due to proximity to comparatively dense population and Category 3
- Proposed Character Preservation Districts
- Zones, policy areas and precincts that have 2km wind farm buffer
- Existing and proposed wind farms
- Built
- Approved and progressing
- Local government boundary
- NPWSA reserves
- Major road
- Major towns
- Other towns and localities

Zones used in analysis for areas that facilitate wind farms based on zones at 10 October 2011. Zones in which wind farms are not explicitly envisaged are current at map production date.

NPWSA reserves supplied by DEWNR.

Produced by DPTI - Planning Division  
© Government of South Australia September 2012





## Statewide Wind Farms DPA - Flinders Ranges

- Wind farms explicitly envisaged and Category 2 if >2km from non-associated dwelling
- Area in which wind farms not explicitly envisaged and Category 3
- Wind farms discouraged due to proximity to comparatively dense population and Category 3

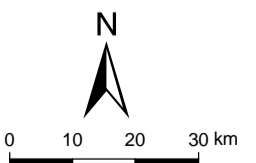
- Proposed Character Preservation Districts
- Zones, policy areas and precincts that have 2km wind farm buffer
- Existing and proposed wind farms
  - Built
  - Approved and progressing

- Local government boundary
- NPWSA reserves
- Major road
- Major towns
- Other towns and localities

Zones used in analysis for areas that facilitate wind farms based on zones at 10 October 2011. Zones in which wind farms are not explicitly envisaged are current at map production date.

NPWSA reserves supplied by DEWNR.

Produced by DPTI - Planning Division  
© Government of South Australia September 2012



Government of South Australia  
Department of Planning,  
Transport and Infrastructure

PLN ID: 4057